

CONFORME

001004

907	9606392.302	561259.586	28.726	TN
908	9606606.448	561215.512	21.759	TN
909	9606465.798	561256.284	29.901	TN
910	9606418.281	561263.545	28.110	TN
911	9606414.568	561279.189	28.273	TN
912	9606403.399	561283.925	28.677	TN
913	9606409.061	561294.998	28.766	TN
914	9606431.863	561299.434	28.595	TN
915	9606410.620	561304.290	29.147	TN
916	9606409.831	561305.048	29.048	TN
917	9606465.743	561294.422	27.384	PER
918	9606465.099	561293.156	27.963	TN
919	9606460.058	561283.364	28.177	TN
920	9606453.041	561285.499	28.176	TN
921	9606446.141	561288.927	28.550	TN
922	9606444.352	561289.698	28.539	TN
923	9606454.827	561270.343	27.791	TN
924	9606438.433	561261.303	27.693	TN
925	9606444.850	561253.203	28.171	TN
926	9606445.009	561243.538	28.872	TN
927	9606439.643	561246.798	28.435	TN
928	9606438.271	561248.047	29.307	RLL
929	9606434.143	561252.090	27.953	TN
930	9606438.544	561234.831	27.738	ZAP
931	9606437.839	561232.074	27.864	ZAP
932	9606434.011	561232.992	27.706	ZAP
933	9606435.187	561235.787	27.854	ZAP
934	9606438.181	561234.842	29.316	ZAP
935	9606437.388	561232.231	29.266	ZAP
936	9606434.691	561232.871	29.413	ZAP
937	9606435.375	561235.544	29.319	ZAP
938	9606436.908	561234.516	30.018	ZAP
939	9606434.373	561227.735	27.575	TN
940	9606423.076	561239.787	27.547	TN
941	9606424.007	561245.899	29.310	TN
942	9606425.033	561230.233	27.449	TN
943	9606408.657	561231.873	27.731	TN
944	9606423.843	561207.357	26.858	TN
945	9606414.814	561211.481	27.193	TN
946	9606413.296	561190.352	27.033	TN
947	9606404.310	561193.919	27.381	TN
948	9606443.665	561168.442	22.954	TN
949	9606455.872	561213.644	28.877	TN
950	9606454.168	561232.227	30.069	TN
951	9606461.207	561245.472	30.026	TRR
952	9606462.205	561256.550	30.015	TN
953	9606481.063	561252.919	29.660	PER
954	9606465.942	561262.134	29.604	CASA



EDWARD CERON TORRES  
JEFE DE PROYECTO  
C.I.P. N° 61778

CONSORCIO CONSULTOR SAUL GARRIDO  
C.P.C. MARIA LUISA CARBAJO MUÑOZ  
REPRESENTANTE COMÚN  
DNI N° 21546425

ARQ. DAVID HECTOR TORRES PUENTE  
CAP. 5776  
JEFE DE SUPERVISIÓN

955	9606462.851	561263.265	29.567	CASA
956	9606463.474	561265.149	29.623	CASA
957	9606467.162	561265.753	29.479	CASA
958	9606475.308	561289.040	26.924	TN
959	9606475.519	561291.211	26.553	PER
960	9606469.383	561281.405	27.517	TN
961	9606537.114	561144.412	21.997	TN
962	9606544.655	561129.218	19.702	PIST
963	9606539.745	561134.191	19.726	PIST
964	9606527.074	561121.813	19.365	PIST
965	9606532.029	561116.867	19.373	PIST
966	9606529.808	561114.695	19.263	ENTRA
967	9606528.326	561113.241	19.186	ENTRA
968	9606517.525	561112.236	18.883	PIST
969	9606512.044	561107.397	18.563	VERT
970	9606517.513	561102.320	20.578	PMT
971	9606507.723	561103.341	20.459	PLZ
972	9606503.833	561106.854	20.735	CASA
973	9606506.347	561104.607	20.458	CASA
974	9606507.877	561102.939	20.086	VRD
975	9606507.930	561102.881	20.309	VRD
976	9606504.587	561099.457	19.900	RAM
977	9606503.292	561100.631	20.629	RAM
978	9606502.007	561097.017	19.827	RAM
979	9606501.156	561097.925	20.448	RAM
980	9606500.707	561096.918	19.821	JARD
981	9606500.187	561095.196	19.689	PIST
982	9606504.143	561089.573	19.584	PIST
983	9606505.226	561088.452	19.666	JARD
984	9606505.941	561087.369	20.063	VRD
985	9606506.537	561086.598	20.049	VRD
986	9606494.558	561076.429	19.422	VRD
987	9606493.861	561077.144	19.353	VRD
988	9606493.791	561077.248	19.178	VRD
989	9606493.297	561077.541	19.126	JARD
990	9606492.564	561078.089	19.005	PIST
991	9606492.566	561077.968	18.992	PIST
992	9606488.306	561083.483	19.004	PIST
993	9606487.692	561083.939	19.313	PLZ
994	9606491.712	561085.955	19.176	BM
995	9606483.886	561080.610	19.071	PLZ
996	9606480.193	561078.650	18.931	CASA
997	9606481.002	561077.933	18.917	VRD
998	9606481.410	561077.893	18.785	JARD
999	9606481.794	561077.371	18.669	VRD
1000	9606486.529	561071.977	18.704	PIST
1001	9606487.258	561071.392	18.796	JARD
1002	9606485.602	561069.688	19.319	VERT

**CONFORME**

001003



*David Hecor*  
 ARQ. DAVID HECTOR TORRES ESPOLINTE  
 CAP. 5776  
 JEFE DE SUPERVISIÓN

CONSORCIO CONSULTOR SAUL GARRIDO  
*Saul Garrido*  
 C.P.C. MARIA LUISA CARBAJO MUÑOZ  
 REPRESENTANTE COMÚN  
 DNI N° 21546425

*Edward Cerón*  
 EDWARD CERÓN TORRES  
 JEFE DE PROYECTO  
 C.I.P. N° 61778

1003	9606486.312	561068.916	19.398	VERT
1004	9606484.578	561070.048	18.542	PIST
1005	9606479.645	561077.194	18.952	VRD
1006	9606478.146	561077.903	18.947	VRD
1007	9606477.346	561078.530	18.871	JARD
1008	9606474.903	561078.256	18.807	JARD
1009	9606474.707	561078.213	18.691	PIST
1010	9606471.089	561073.516	18.686	PIST
1011	9606470.976	561073.529	18.893	JARD
1012	9606478.844	561064.157	18.981	PMT
1013	9606478.655	561064.231	18.728	PIST
1014	9606473.384	561069.183	18.701	PIST
1015	9606471.267	561067.170	18.782	JARD
1016	9606471.535	561068.309	18.689	JARD
1017	9606469.959	561067.687	18.772	JARD
1018	9606460.365	561081.182	18.735	JARD
1019	9606471.802	561070.108	18.904	VRD
1020	9606467.974	561053.659	18.127	PIST
1021	9606463.271	561058.798	18.126	PIST
1022	9606463.110	561016.209	19.362	PIST
1023	9606463.925	561041.505	17.895	PIST
1024	9606454.829	561037.508	17.488	PIST
1025	9606325.330	561185.590	25.130	PIST
1026	9606326.028	561186.240	25.347	PIST
1027	9606345.212	561175.038	25.631	PIST
1028	9606338.246	561180.311	25.639	VRD
1029	9606338.342	561179.413	25.649	VRD
1030	9606345.929	561176.476	25.562	VRD
1031	9606346.247	561177.144	25.566	VRD
1032	9606356.283	561172.124	25.595	VRD
1033	9606354.579	561169.908	25.554	VRD
1034	9606354.645	561169.854	25.540	PLZ
1035	9606355.273	561169.918	25.524	VRD
1036	9606367.772	561159.928	24.370	PIST
1037	9606369.979	561163.133	24.341	PIST
1038	9606373.254	561160.864	24.125	PIST
1039	9606370.855	561157.328	24.135	PIST
1040	9606370.475	561157.419	24.693	PLZ
1041	9606378.640	561157.499	23.780	PIST
1042	9606375.672	561153.447	23.763	PIST
1043	9606379.598	561150.312	23.325	PIST
1044	9606382.727	561154.644	23.509	PIST
1045	9606387.388	561151.731	22.792	PLZ
1046	9606390.883	561149.386	22.383	PIST
1047	9606388.328	561144.062	22.328	PIST
1048	9606396.334	561137.506	21.868	PLZ
1049	9606396.665	561137.613	21.658	PIST
1050	9606399.476	561142.972	21.777	PIST

**CONFORME**

001002



*[Signature]*  
 EDWARD GERON TORRES  
 JEFE DE PROYECTO  
 C.I.P. N° 61778

*[Signature]*  
 ARQ. DAVID FECTOR TORRES PUENTE  
 CAP. 5776  
 JEFE DE SUPERVISIÓN

CONSORCIO CONSULTOR SAUL GARRIDO  
*[Signature]*  
 C.P.C. MARIA LUISA CARBAJO MUÑOZ  
 REPRESENTANTE COMÚN  
 DNI N° 21546425

**CONFORME**

001001

1051	9606404.038	561131.573	20.889	PIST
1052	9606407.659	561135.744	20.870	PIST
1053	9606414.490	561122.352	20.231	PIST
1054	9606418.265	561126.945	20.217	PIST
1055	9606420.071	561127.682	20.488	PLZ
1056	9606428.034	561121.164	20.264	PLZ
1057	9606427.858	561118.671	19.865	PIST
1058	9606427.870	561120.182	20.084	VRD
1059	9606423.742	561114.555	19.846	PIST
1060	9606423.353	561114.340	20.005	PLZ
1061	9606422.195	561113.773	18.846	VRD
1062	9606432.635	561117.053	18.756	VRD
1063	9606426.917	561109.582	18.758	VRD
1064	9606427.719	561111.058	18.715	PIST
1065	9606431.365	561115.622	18.700	PIST
1066	9606443.339	561107.568	18.954	VRD
1067	9606442.267	561106.322	18.551	PIST
1068	9606438.376	561101.767	18.627	PIST
1069	9606437.423	561100.637	18.827	VRD
1070	9606462.293	561060.496	18.075	PIST
1071	9606463.714	561087.566	17.927	PIST
1072	9606465.371	561088.975	18.443	PLZ
1073	9606465.108	561088.837	18.361	VRD
1074	9606473.032	561079.797	17.620	PIST
1075	9606474.672	561080.830	18.596	VRD
1076	9606475.872	561081.629	18.683	VRD
1077	9606474.894	561078.206	18.328	VRD
1078	9606476.020	561077.980	18.206	VRD
1079	9606477.190	561078.478	18.236	VRD
1080	9606469.814	561072.927	18.202	VRD
1081	9606470.783	561073.681	17.796	PLZ
1082	9606467.034	561031.994	17.112	PMT
1083	9606466.853	561031.878	16.774	PIST
1084	9606469.806	561032.276	17.247	VRD
1085	9606470.841	561032.959	18.428	VRD
1086	9606459.714	561029.972	16.730	PIST
1087	9606458.939	561029.592	18.096	PIST
1088	9606452.973	561032.997	18.331	CASA
1089	9606463.294	561020.466	18.888	PLZ
1090	9606464.525	561016.045	19.336	VRD
1091	9606464.424	561014.605	19.429	VRD
1092	9606462.212	561012.637	19.485	VRD
1093	9606460.123	561010.624	19.460	VRD
1094	9606460.602	561001.745	19.176	PIST
1095	9606455.028	560996.964	18.970	PIST
1096	9606451.352	561001.898	18.951	PIST
1097	9606463.337	561002.117	19.210	PIST
1098	9606466.638	561000.858	19.242	PIST



CONSORCIO CONSULTOR SAUL GARRIDO

C.P.C. MARIA LUISA CARBAJO MUÑOZ  
REPRESENTANTE COMUN  
DNI N° 21546425

EDWARD CERON TORRES  
JEFE DE PROYECTO  
C.I.P. N° 61778

ARQ. DAVID HECTOR TORRES PUENTE  
CAP. 5776  
JEFE DE SUPERVISIÓN

CONFORME

001000

1099	9606469.447	560996.885	19.317	PIST
1100	9606469.267	560996.812	19.383	PLZ
1101	9606468.252	560996.329	19.371	VRD
1102	9606476.377	560996.475	19.393	PIST
1103	9606478.521	560996.836	19.868	VRD
1104	9606483.152	560977.355	19.822	VRD
1105	9606481.064	560977.035	19.474	PIST
1106	9606474.989	560975.488	19.376	PIST
1107	9606475.004	560975.450	19.578	PLZ
1108	9606482.878	560971.746	19.641	PMT
1109	9606486.176	560963.770	19.715	PLZ
1110	9606481.442	560950.728	19.717	PLZ
1111	9606488.921	560919.847	20.110	PLZ
1112	9606489.148	560918.985	20.087	VRD
1113	9606489.034	560917.549	20.309	VRD
1114	9606483.708	560914.978	19.374	VRD
1115	9606482.415	560914.236	19.344	PIST
1116	9606484.002	560908.853	18.411	PIST
1117	9606460.882	561082.391	17.954	PIST
1118	9606481.086	560906.754	19.697	PIST
1119	9606478.758	560911.796	19.593	PIST
1120	9606490.477	560910.468	19.899	VRD
1121	9606491.820	560908.978	19.915	VRD
1122	9606492.953	560904.549	19.687	VRD
1123	9606493.004	560903.075	19.859	PMT
1124	9606493.197	560901.005	19.835	PMT
1125	9606497.035	560888.725	19.324	VRD
1126	9606497.342	560887.318	19.291	VRD
1127	9606497.547	560885.884	19.310	VRD
1128	9606496.756	560884.687	19.254	VRD
1129	9606495.442	560883.780	19.312	VRD
1130	9606494.606	560884.583	19.574	VRD
1131	9606495.899	560885.656	19.506	VRD
1132	9606496.225	560886.213	19.491	VRD
1133	9606496.150	560887.020	19.523	VRD
1134	9606500.002	560879.849	19.266	PIST
1135	9606500.682	560878.655	19.481	VRD
1136	9606501.977	560877.716	19.521	VRD
1137	9606504.083	560883.046	19.245	PIST
1138	9606505.089	560881.614	19.248	PIST
1139	9606496.404	560917.654	19.959	PIST
1140	9606497.232	560917.532	20.077	PLZ
1141	9606497.736	560916.383	20.010	PLZ
1142	9606497.928	560916.471	20.031	VRD
1143	9606499.126	560909.788	19.960	PMT
1144	9606499.511	560909.390	19.929	VRD
1145	9606501.556	560902.010	19.913	PLZ
1146	9606501.362	560902.244	19.777	VRD



EDWARD CERON TORRES  
JEFE DE PROYECTO  
C.I.P. N° 61778

CONSORCIO CONSULTOR SAUL GARRIDO

C.P.C. MARIA LUISA CARBAJO MUÑOZ  
REPRESENTANTE COMUN  
DNI N° 21978429

ARQ. DAVID HECTOR TORRES PUENTE  
CAP. 5776  
JEFE DE SUPERVISIÓN

CONFORME

000999

1147	9606501.753	560901.345	19.630	VRD
1148	9606502.727	560901.332	19.499	VRD
1149	9606502.289	560898.005	19.432	PLZ
1150	9606501.305	560898.729	19.458	JARD
1151	9606505.179	560895.129	19.215	JARD
1152	9606512.732	560897.261	18.911	JARD
1153	9606516.094	560899.837	18.847	JARD
1154	9606510.969	560904.376	19.245	VRD
1155	9606508.692	560902.504	19.324	VRD
1156	9606507.843	560903.333	19.663	VRD
1157	9606509.764	560904.826	19.642	VRD
1158	9606490.858	560945.007	19.853	VRD
1159	9606491.967	560945.390	20.138	VRD
1160	9606489.461	560945.088	19.760	PIST
1161	9606453.640	561039.454	16.938	VRD
1162	9606452.437	561039.700	16.863	VRD
1163	9606451.357	561039.018	16.815	VRD
1164	9606450.477	561037.982	17.025	PMT
1165	9606451.885	561038.100	17.797	VRD
1166	9606453.434	561036.418	17.821	VRD
1167	9606447.826	561045.439	17.154	PLZ
1168	9606447.997	561045.325	16.858	PIST
1169	9606447.313	561046.102	18.076	VRD
1170	9606446.103	561047.043	18.012	VRD
1171	9606445.840	561047.436	18.011	VRD
1172	9606446.201	561047.230	18.020	PLZ
1173	9606431.671	561034.424	16.732	PIST
1174	9606432.565	561035.264	17.266	PIST
1175	9606433.163	561035.758	17.221	PIST
1176	9606426.976	561031.598	16.570	PIST
1177	9606423.064	561028.034	16.506	PIST
1178	9606424.298	561026.294	16.321	PIST
1179	9606424.722	561024.869	16.356	VRD
1180	9606424.796	561022.834	16.058	VRD
1181	9606424.028	561024.023	16.026	VRD
1182	9606428.830	561019.192	16.071	PIST
1183	9606429.473	561018.457	16.172	VRD
1184	9606418.840	561034.334	17.087	VRD
1185	9606418.156	561035.115	17.209	VRD
1186	9606417.145	561035.259	17.421	VRD
1187	9606415.861	561034.733	17.226	VRD
1188	9606413.277	561041.049	17.369	VRD
1189	9606411.392	561039.963	17.158	VRD
1190	9606414.402	561042.249	17.430	VRD
1191	9606414.053	561043.505	17.509	VRD
1192	9606412.367	561046.481	17.665	VRD
1193	9606410.198	561048.456	18.420	VRD
1194	9606418.490	561046.841	18.275	VRD



CONSORCIO CONSULTOR SAUL GARRIDO

C.P.C. MARIA LUISA CARBAJO MUÑOZ  
REPRESENTANTE COMÚN  
DNI N° 21546425

EDWARD CERON TORRES  
JEFE DE PROYECTO  
C.I.P. N° 61778

ARQ. DAVID HECTOR TORRES PUENTE  
CAP. 5776  
JEFE DE SUPERVISIÓN

**CONFORME**

000598

1195	9606419.304	561047.649	18.423	VRD
1196	9606407.999	561057.630	18.674	VRD
1197	9606408.868	561058.435	18.911	VRD
1198	9606404.115	561054.661	18.644	VRD
1199	9606403.317	561054.656	18.272	VRD
1200	9606402.765	561063.909	18.497	PLZ
1201	9606386.336	561080.284	19.246	PLZ
1202	9606384.940	561080.885	19.036	VRD
1203	9606385.929	561081.943	19.105	VRD
1204	9606379.728	561079.067	19.252	VRD
1205	9606377.293	561089.429	19.789	PLZ
1206	9606363.120	561102.938	20.488	VRD
1207	9606363.715	561103.556	20.817	VRD
1208	9606359.665	561099.432	20.468	VRD
1209	9606359.331	561098.113	20.679	VRD
1210	9606351.627	561105.730	20.927	PLZ
1211	9606352.876	561113.635	21.320	PLZ
1212	9606342.974	561122.818	21.396	VRD
1213	9606343.893	561123.678	21.537	VRD
1214	9606339.061	561119.657	21.364	VRD
1215	9606331.085	561127.613	21.674	VRD
1216	9606334.100	561131.088	21.694	VRD
1217	9606326.728	561139.024	23.661	PLZ
1218	9606326.095	561139.228	21.448	PIST
1219	9606318.978	561139.814	21.230	PIST
1220	9606318.317	561139.507	21.676	PLZ
1221	9606322.179	561143.229	21.196	PIST
1222	9606306.058	561158.686	19.566	VRD
1223	9606306.976	561159.916	19.941	VRD
1224	9606302.445	561155.641	19.616	VRD
1225	9606301.829	561154.818	19.877	VRD
1226	9606300.467	561163.807	19.288	PIST
1227	9606297.128	561160.316	19.237	PIST
1228	9606297.691	561166.151	19.233	PIST
1229	9606294.890	561162.127	19.214	PIST
1230	9606293.855	561169.279	19.267	PIST
1231	9606291.027	561165.973	19.303	PIST
1232	9606282.495	561173.079	19.552	PIST
1233	9606286.422	561176.189	19.467	PIST
1234	9606281.818	561170.672	20.265	PLZ
1235	9606282.332	561171.618	19.893	VRD
1236	9606279.602	561181.359	21.199	PLZ
1237	9606272.387	561188.262	22.280	VRD
1238	9606271.581	561187.636	22.324	VRD
1239	9606271.394	561187.303	21.669	PIST
1240	9606269.113	561183.213	21.602	PIST
1241	9606268.624	561183.360	21.805	VRD
1242	9606268.103	561182.689	21.885	VRD



*[Signature]*  
EDWARD CERON TORRES  
JEFE DE PROYECTO  
C.I.P. N° 61778

CONSORCIO CONSULTOR SAUL GARRIDO  
*[Signature]*  
C.P.C. MARIA LOISA CARBAJO MUÑOZ  
REPRESENTANTE COMUN  
DNI N° 21546425

*[Signature]*  
ARQ. DAVID HECTOR TORRES PUENTE  
CAP. 5776  
JEFE DE SUPERVISIÓN

1243	9606245.523	561201.388	25.040	PIST
1244	9606244.375	561200.425	25.487	PLZ
1245	9606244.665	561200.413	25.697	VRD
1246	9606246.880	561206.415	25.263	PIST
1247	9606239.554	561212.093	27.074	PLZ
1248	9606239.007	561212.068	26.465	PIST
1249	9606236.214	561208.798	26.461	PIST
1250	9606218.349	561222.373	29.389	PIST
1251	9606219.773	561226.592	29.577	PLZ
1252	9606211.423	561225.476	30.125	PLZ
1253	9606212.815	561225.510	29.985	VRD
1254	9606210.689	561226.852	30.120	VRD
1255	9606209.963	561227.093	29.917	VRD
1256	9606209.032	561226.614	29.955	VRD
1257	9606210.032	561225.802	30.119	VRD
1258	9606207.993	561226.862	29.719	PIST
1259	9606203.038	561229.415	29.824	PIST
1260	9606202.458	561229.624	31.191	VRD
1261	9606200.974	561230.243	31.175	VRD
1262	9606203.660	561231.724	31.362	PLZ
1263	9606204.276	561232.287	30.435	PLZ
1264	9606201.145	561227.614	30.454	VRD
1265	9606205.150	561222.023	29.712	PIST
1266	9606205.938	561221.354	30.161	VRD
1267	9606206.638	561220.499	29.571	VRD
1268	9606201.917	561215.278	28.288	VRD
1269	9606201.946	561215.307	28.304	VRD
1270	9606201.142	561213.914	28.177	VRD
1271	9606202.017	561212.827	28.009	VRD
1272	9606200.760	561214.270	27.926	PIST
1273	9606200.253	561212.323	27.576	PIST
1274	9606200.672	561211.007	27.319	PIST
1275	9606201.398	561210.323	27.227	PIST
1276	9606202.862	561211.491	27.949	PIST
1277	9606204.549	561206.963	26.993	PIST
1278	9606205.471	561208.071	27.237	PLZ
1279	9606200.225	561202.937	26.781	VRD
1280	9606199.161	561201.699	27.009	VRD
1281	9606199.147	561201.806	27.025	VRD
1282	9606198.359	561201.022	27.021	VRD
1283	9606198.160	561203.818	26.880	VRD
1284	9606196.285	561203.409	26.925	VRD
1285	9606195.990	561199.194	26.819	VRD
1286	9606196.659	561198.442	26.937	VRD
1287	9606193.946	561197.756	26.865	PLZ
1288	9606197.175	561200.164	26.795	VRD
1289	9606190.185	561194.384	26.810	VRD
1290	9606185.667	561193.490	26.775	VRD

**CONFORME**

000597



CONSORCIO CONSULTOR SAUL GARRIDO  
 C.P.C. MARIA LOISA CARBAJO MUÑOZ  
 REPRESENTANTE COMUN  
 BNI N° 21546425

EDWARD CERON TORRES  
 JEFE DE PROYECTO  
 C.I.P. N° 61778

ARQ. DAVID HECTOR TORRES PUENTE  
 CAP. 5776  
 JEFE DE SUPERVISIÓN



**CONFORME**

1291	9606184.257	561193.087	26.825	VRD
1292	9606179.157	561192.026	26.443	PIST
1293	9606173.976	561191.117	26.198	PIST
1294	9606174.065	561191.137	26.170	PIST
1295	9606167.873	561190.726	25.633	PIST
1296	9606164.870	561191.004	25.574	PLZ
1297	9606164.621	561195.538	25.636	PLZ
1298	9606155.036	561190.302	24.702	PLZ
1299	9606152.154	561195.041	24.520	PIST
1300	9606151.525	561190.185	24.297	PIST
1301	9606149.671	561189.995	24.042	PIST
1302	9606142.231	561189.271	22.617	PIST
1303	9606139.895	561193.934	22.652	PIST
1304	9606138.138	561187.996	22.094	PLZ
1305	9606126.362	561185.111	19.861	PIST
1306	9606124.848	561191.542	19.982	PIST
1307	9606112.021	561187.037	17.706	PIST
1308	9606107.909	561185.792	16.668	PIST
1309	9606064.951	561234.727	17.267	VRD
1310	9606107.843	561185.982	17.286	VRD
1311	9606107.144	561187.531	17.187	VRD
1312	9606105.094	561185.574	16.777	VRD
1313	9606105.138	561187.264	16.730	VRD
1314	9606105.133	561185.340	16.055	PIST
1315	9606102.589	561186.465	15.634	PIST
1316	9606102.715	561186.517	16.559	VRD
1317	9606103.487	561187.807	16.628	VRD
1318	9606102.661	561189.639	16.681	VRD
1319	9606101.073	561189.078	16.681	VRD
1320	9606100.983	561188.947	15.718	PIST
1321	9606095.134	561202.321	15.887	PIST
1322	9606088.617	561219.693	16.203	PIST
1323	9606088.698	561219.891	17.158	VRD
1324	9606090.171	561219.995	17.178	VRD
1325	9606090.265	561222.377	16.911	VRD
1326	9606089.013	561222.658	17.789	VRD
1327	9606088.730	561222.690	16.956	PIST
1328	9606090.053	561225.230	17.307	PIST
1329	9606091.018	561226.722	17.508	PIST
1330	9606093.484	561228.737	17.330	PIST
1331	9606092.929	561228.044	18.024	PLZ
1332	9606096.229	561229.812	18.396	PLZ
1333	9606096.420	561229.890	17.635	PIST
1334	9606099.267	561231.113	18.016	PIST
1335	9606094.000	561236.680	17.663	PIST
1336	9606093.217	561238.200	17.899	VRD
1337	9606087.538	561236.348	17.195	VRD
1338	9606088.175	561234.624	16.972	VRD

000596



*[Signature]*  
EDWARD CERON TORRES  
JEFE DE PROYECTO  
C.I.E. Nº 61770

CONSORCIO CONSULTOR SAUL GARRIDO  
*[Signature]*  
C.P.C. MARIA ROSA CARBAJO MUÑOZ  
REPRESENTANTE COMÚN  
DNI Nº 21546425

*[Signature]*  
ARQ. DAVID HECTOR TORRES PUENTE  
CAP. 5776  
JEFE DE SUPERVISIÓN

**CONFORME**

000995

1339	9606081.546	561240.796	16.763	PIST
1340	9606085.112	561234.042	17.281	PIST
1341	9606085.138	561234.052	17.299	PIST
1342	9606085.434	561235.807	17.319	PIST
1343	9606083.918	561236.707	17.320	PIST
1344	9606082.500	561238.043	17.291	PIST
1345	9606080.772	561237.566	17.278	PIST
1346	9606080.653	561237.338	16.472	PIST
1347	9606079.554	561240.048	16.504	PIST
1348	9606063.263	561224.245	17.083	PIST
1349	9606057.309	561224.413	17.492	PIST
1350	9606058.354	561231.521	17.424	PIST
1351	9606061.789	561232.899	17.368	PIST
1352	9606061.757	561231.510	17.244	PIST
1353	9606063.532	561231.551	17.328	PIST
1354	9606066.334	561231.985	17.335	PIST
1355	9606074.575	561220.218	16.289	PIST
1356	9606078.788	561215.721	16.174	PIST
1357	9606077.384	561214.523	17.160	PIST
1358	9606080.211	561211.636	17.116	PMT
1359	9606081.327	561210.292	17.087	PIST
1360	9606079.774	561209.627	17.070	PIST
1361	9606082.790	561205.797	17.024	PLZ
1362	9606083.584	561205.574	16.030	PIST
1363	9606088.579	561193.580	15.802	PIST
1364	9606093.162	561182.351	15.607	PIST
1365	9606093.079	561182.112	16.623	PLZ
1366	9606093.430	561180.942	16.630	PMT
1367	9606094.325	561179.559	15.582	PIST
1368	9606094.443	561176.826	15.591	PIST
1369	9606094.173	561175.869	15.653	PIST
1370	9606092.141	561174.668	15.833	PIST
1371	9606089.838	561174.311	18.600	VRD
1372	9606089.057	561175.773	18.657	VRD
1373	9606085.871	561175.126	18.621	VRD
1374	9606086.401	561173.312	18.636	PLZ
1375	9606085.806	561173.381	18.678	PLZ
1376	9606085.210	561172.613	17.001	PIST
1377	9606088.392	561166.162	16.338	PIST
1378	9606085.518	561165.323	16.497	PIST
1379	9606085.538	561165.345	16.488	PIST
1380	9606093.698	561167.619	15.798	PIST
1381	9606096.920	561168.279	15.583	PIST
1382	9606097.238	561168.495	15.648	PIST
1383	9606099.666	561166.467	15.393	PIST
1384	9606124.338	561148.077	14.964	PIST
1385	9606124.543	561148.179	15.954	PLZ
1386	9606116.551	561159.000	15.191	PIST



CONSORCIO CONSULTOR SAUL GARRIDO  
C.P.C. MARIA LUISA CARBAJO MUÑOZ  
REPRESENTANTE COMUN  
DNI Nº 21546425

EDWARD CERON TORRES  
JEFE DE PROYECTO  
C.P. N° 61778

ARQ. DAVID HECTOR TORRES FUENTE  
CAP. 5776  
JEFE DE SUPERVISIÓN

1387	9606114.356	561163.097	16.856	PMT
1388	9606108.297	561170.551	15.487	PIST
1389	9606106.803	561174.766	15.738	PIST
1390	9606107.802	561177.793	16.014	PIST
1391	9606110.034	561179.792	16.643	PIST
1392	9606114.247	561181.327	17.629	PIST
1393	9606114.923	561180.481	18.212	PIST
1394	9606158.712	561195.075	25.115	PIST
1395	9606169.954	561196.743	26.559	PIST
1396	9606179.418	561201.471	27.529	PIST
1397	9606185.265	561206.920	28.580	PLZ
1398	9606184.991	561206.873	28.257	PIST
1399	9606201.444	561201.687	26.706	PIST
1400	9606207.342	561203.891	26.685	PIST
1401	9606212.738	561200.365	26.480	PLZ
1402	9606215.960	561184.804	25.069	PLZ
1403	9606221.783	561188.487	25.166	PIST
1404	9606216.623	561185.722	25.133	PIST
1405	9606228.863	561183.894	24.868	PLZ
1406	9606231.264	561179.281	23.979	PIST
1407	9606232.938	561180.682	24.774	PIST
1408	9606253.643	561157.500	22.051	PLZ
1409	9606255.175	561154.122	21.502	PIST
1410	9606257.137	561155.507	21.818	VRD
1411	9606252.395	561148.751	21.269	PIST
1412	9606266.289	561134.100	19.704	PIST
1413	9606270.833	561137.787	19.770	PIST
1414	9606273.224	561138.419	20.123	VRD
1415	9606267.105	561133.450	19.622	PIST
1416	9606266.933	561131.551	19.465	VRD
1417	9606276.874	561122.954	18.478	PIST
1418	9606281.698	561126.389	18.379	PIST
1419	9606291.381	561116.235	17.340	PIST
1420	9606287.354	561112.147	17.332	PIST
1421	9606298.155	561100.729	16.975	PIST
1422	9606301.916	561105.137	16.989	PIST
1423	9606308.417	561101.102	17.367	PLZ
1424	9606316.116	561082.029	17.811	PIST
1425	9606320.326	561086.060	17.789	PIST
1426	9606331.877	561076.326	19.170	PLZ
1427	9606332.319	561076.047	19.311	PLZ
1428	9606334.225	561063.193	18.562	PLZ
1429	9606334.215	561063.187	18.552	PIST
1430	9606338.307	561067.262	18.607	PIST
1431	9606334.476	561065.575	18.568	PLZ
1432	9606343.044	561053.941	18.026	PIST
1433	9606347.016	561058.313	18.274	PIST
1434	9606353.264	561054.233	18.420	PLZ

**CONFORME**

000904



EDWARD CERON TORRES  
JEFE DE PROYECTO  
C.P. N° 61778

CONSORCIO CONSULTOR SAUL GARRIDO

C.P.C. MARIA LUISA CARBAJO MUÑOZ  
REPRESENTANTE COMÚN  
DNI N° 21546425

ARQ. DAVID HECTOR TORRES PUENTE  
CAP. 5776  
JEFE DE SUPERVISIÓN

**CONFORME**

000993

1435	9606353.091	561055.038	18.700	VRD
1436	9606354.018	561055.781	18.709	VRD
1437	9606347.817	561046.547	17.767	VRD
1438	9606346.923	561045.915	17.785	VRD
1439	9606369.657	561026.221	15.333	VRD
1440	9606368.776	561024.925	15.226	VRD
1441	9606292.785	560910.020	12.349	VRD
1442	9606370.115	561023.686	15.132	VRD
1443	9606368.020	561020.973	14.544	PIST
1444	9606363.784	561019.333	14.123	PIST
1445	9606364.368	561012.486	13.883	PIST
1446	9606372.370	561015.706	14.599	PIST
1447	9606377.414	561024.923	15.320	BZN
1448	9606376.857	561027.501	15.393	PIST
1449	9606378.112	561028.690	15.929	PIST
1450	9606377.879	561028.258	15.960	PIST
1451	9606378.180	561026.246	15.403	PIST
1452	9606380.385	561026.449	15.396	PLZ
1453	9606382.989	561027.193	15.469	PLZ
1454	9606197.190	561218.059	28.240	PIST
1455	9606196.896	561218.034	28.180	PIST
1456	9606194.877	561219.506	29.318	VRD
1457	9606193.884	561220.541	29.361	VRD
1458	9606210.840	561233.377	30.410	VRD
1459	9606212.224	561232.579	30.257	VRD
1460	9606211.068	561231.772	30.277	VRD
1461	9606210.794	561232.270	30.290	VRD
1462	9606212.142	561237.792	30.742	VRD
1463	9606209.715	561246.977	30.893	VRD
1464	9606214.410	561244.752	30.913	VRD
1465	9606214.378	561244.673	31.250	VRD
1466	9606215.562	561244.178	31.257	VRD
1467	9606219.119	561255.138	31.354	VRD
1468	9606218.070	561255.518	31.371	VRD
1469	9606217.914	561255.534	31.092	VRD
1470	9606212.814	561257.084	31.069	VRD
1471	9606212.894	561258.281	31.287	JARD
1472	9606222.207	561264.586	31.514	VRD
1473	9606221.078	561265.051	31.496	VRD
1474	9606221.041	561265.069	31.276	VRD
1475	9606494.028	561291.734	26.078	VRD
1476	9606493.959	561291.752	25.863	VRD
1477	9606483.732	561295.215	25.776	VRD
1478	9606484.346	561296.383	25.715	VRD
1479	9606483.927	561295.363	25.588	VRD
1480	9606482.626	561290.502	25.544	VRD
1481	9606482.660	561290.600	25.701	VRD
1482	9606482.315	561289.446	25.813	VRD



CONSORCIO CONSULTOR SAUL GARRIDO

C.P.C. MARIA LUISA CARBAJO MUÑOZ  
REPRESENTANTE COMÚN  
DNI Nº 21546425

EDWARD CERON TORRES  
JEFE DE PROYECTO  
C.I.P. Nº 61778

ARQ. DAVID HECTOR TORRES FUENTE  
CAP. 5776  
JEFE DE SUPERVISIÓN

**CONFORME**

1483	9606488.248	561288.357	26.017	PMT
1484	9606468.285	561295.197	26.137	VRD
1485	9606468.349	561295.173	26.303	VRD
1486	9606467.974	561294.107	26.297	VRD
1487	9606467.975	561294.118	26.312	VRD
1488	9606469.841	561298.823	26.066	VRD
1489	9606469.853	561298.862	26.278	VRD
1490	9606468.710	561299.237	26.165	VRD
1491	9606468.789	561299.317	26.324	VRD
1492	9606465.130	561301.352	26.387	PLZ
1493	9606452.303	561300.468	27.789	VRD
1494	9606452.387	561300.498	27.981	VRD
1495	9606451.950	561299.418	27.997	VRD
1496	9606454.041	561304.032	27.744	VRD
1497	9606454.023	561304.018	27.976	VRD
1498	9606432.354	561307.096	30.064	VRD
1499	9606432.308	561307.091	30.273	VRD
1500	9606431.799	561306.087	30.291	VRD
1501	9606433.676	561310.542	30.037	VRD
1502	9606426.068	561311.301	30.305	VRD
1503	9606425.422	561309.548	30.350	VRD
1504	9606425.459	561309.352	30.556	VRD
1505	9606425.187	561308.363	30.610	VRD
1506	9606426.343	561313.037	30.313	VRD
1507	9606426.446	561313.214	30.525	VRD
1508	9606427.371	561314.028	30.610	PLZ
1509	9606452.366	561334.905	28.412	JARD
1510	9606416.147	561318.432	30.276	JARD
1511	9606415.737	561316.798	30.100	PIST
1512	9606414.478	561313.068	30.066	VRD
1513	9606414.296	561313.051	30.230	VRD
1514	9606414.100	561312.036	30.204	VRD
1515	9606417.205	561312.118	30.390	PMT
1516	9606398.914	561324.462	29.231	PLZ
1517	9606398.101	561324.864	29.061	RAM
1518	9606396.632	561325.456	29.036	RAM
1519	9606397.336	561322.952	28.784	RAM
1520	9606395.620	561323.455	28.633	RAM
1521	9606393.699	561324.302	28.519	VRD
1522	9606393.654	561324.184	28.950	VRD
1523	9606370.051	561327.549	28.528	VRD
1524	9606393.264	561326.824	28.930	VRD
1525	9606393.068	561327.843	27.819	VRD
1526	9606394.274	561327.694	28.057	VRD
1527	9606396.625	561333.523	26.827	VRD
1528	9606396.688	561333.388	27.052	VRD
1529	9606397.431	561332.679	27.098	VRD
1530	9606403.651	561337.477	26.580	VRD

000992



*[Signature]*  
EDWARD CERON TORRES  
JEFE DE PROYECTO  
C.I.P. N° 61778

CONSORCIO CONSULTOR SAUL GARRIDO  
*[Signature]*  
C.P.C. MARIA LUISA CARBAJO MUÑOZ  
REPRESENTANTE COMÚN  
DNI N° 21546425

*[Signature]*  
ARQ. DAVID HECTOR TORRES PUENTE  
CAP. 5776  
JEFE DE SUPERVISIÓN

CONFORME

000991

1531	9606403.726	561337.578	26.775	VRD
1532	9606403.885	561336.958	26.852	VRD
1533	9606401.560	561339.993	26.513	VRD
1534	9606401.461	561340.097	26.620	VRD
1535	9606401.205	561340.835	26.684	VRD
1536	9606396.720	561338.244	26.555	VRD
1537	9606395.214	561338.778	26.530	VRD
1538	9606396.101	561339.261	26.554	VRD
1539	9606395.954	561340.430	26.304	VRD
1540	9606395.933	561340.370	26.519	VRD
1541	9606409.262	561345.599	24.398	VRD
1542	9606409.783	561344.694	24.404	VRD
1543	9606409.352	561345.665	24.249	VRD
1544	9606411.511	561346.966	23.945	VRD
1545	9606413.514	561348.785	23.579	VRD
1546	9606413.612	561348.737	23.738	VRD
1547	9606414.353	561347.885	23.776	VRD
1548	9606418.321	561352.479	22.944	BZN
1549	9606417.848	561352.880	22.730	VRD
1550	9606417.860	561352.786	22.904	VRD
1551	9606413.417	561355.808	22.943	VRD
1552	9606413.465	561355.797	23.076	VRD
1553	9606412.588	561356.526	23.106	VRD
1554	9606409.538	561352.313	23.730	VRD
1555	9606407.333	561350.947	24.131	VRD
1556	9606404.778	561349.651	24.500	VRD
1557	9606404.738	561349.671	24.509	VRD
1558	9606404.566	561350.356	24.657	VRD
1559	9606404.446	561350.536	24.659	VRD
1560	9606404.763	561349.843	24.644	VRD
1561	9606392.600	561344.864	26.365	VRD
1562	9606392.655	561344.998	26.537	VRD
1563	9606392.231	561345.710	26.546	VRD
1564	9606389.615	561342.772	26.664	VRD
1565	9606389.038	561343.286	26.873	VRD
1566	9606386.033	561339.227	27.061	VRD
1567	9606385.619	561339.916	27.221	VRD
1568	9606381.215	561336.648	27.459	VRD
1569	9606381.126	561336.612	27.659	VRD
1570	9606380.906	561337.263	27.654	VRD
1571	9606379.369	561336.914	27.578	VRD
1572	9606379.373	561337.021	27.754	VRD
1573	9606379.104	561337.697	27.102	ALI
1574	9606379.260	561337.552	27.545	ALI
1575	9606374.315	561338.986	27.612	ALI
1576	9606374.250	561339.050	27.882	ALI
1577	9606374.183	561338.945	28.297	VRD
1578	9606373.058	561339.345	28.364	VRD



*[Signature]*  
ABRIL DAVID HECTOR TORRES PUEN  
C/CAR: 5776  
JEFE DE SUPERVISIÓN

CONSORCIO CONSULTOR SAUL GARRIDO  
*[Signature]*  
C.P.C. MARIA LUISA CARBAJO MUÑOZ  
REPRESENTANTE COMUN  
DNI N° 21540425

*[Signature]*  
EDWARD CERCA TORRES  
JEFE DE PROYECTO  
C.I.P. N° 61778

CONFORME

000590

1579	9606379.584	561338.266	27.552	VRD
1580	9606379.619	561338.259	27.669	VRD
1581	9606380.693	561337.894	27.700	VRD
1582	9606382.328	561346.882	27.604	VRD
1583	9606382.388	561346.832	27.671	VRD
1584	9606383.350	561346.546	27.758	VRD
1585	9606377.191	561347.768	27.649	VRD
1586	9606377.013	561347.800	27.777	VRD
1587	9606376.101	561347.958	28.376	VRD
1588	9606372.158	561333.273	28.543	PIST
1589	9606370.259	561334.759	28.783	JARD
1590	9606370.348	561333.926	28.122	PIST
1591	9606370.579	561335.916	28.363	VRD
1592	9606355.509	561339.328	30.082	PLZ
1593	9606355.785	561339.262	30.065	VRD
1594	9606356.173	561340.271	30.150	VRD
1595	9606355.540	561338.640	29.253	PIST
1596	9606353.081	561333.149	29.273	VRD
1597	9606353.113	561333.182	29.460	VRD
1598	9606352.885	561332.165	29.434	VRD
1599	9606348.735	561334.542	29.862	PMT
1600	9606331.778	561340.172	31.253	VRD
1601	9606331.487	561339.279	31.221	VRD
1602	9606331.708	561340.244	31.072	VRD
1603	9606333.620	561345.934	31.054	VRD
1604	9606333.846	561346.045	31.237	VRD
1605	9606333.991	561346.860	31.503	VRD
1606	9606334.337	561347.798	31.507	VRD
1607	9606314.205	561353.589	32.314	VRD
1608	9606314.626	561354.618	32.322	VRD
1609	9606318.122	561352.555	32.304	PMT
1610	9606314.308	561353.029	31.987	JARD
1611	9606314.212	561352.447	31.935	VRD
1612	9606311.665	561346.835	32.010	VRD
1613	9606117.211	561145.349	14.965	VRD
1614	9606311.748	561346.924	32.191	VRD
1615	9606311.432	561345.815	32.288	VRD
1616	9606296.830	561358.041	32.466	VRD
1617	9606296.857	561358.132	32.655	VRD
1618	9606296.973	561358.841	32.647	JARD
1619	9606297.145	561359.329	32.605	VRD
1620	9606294.528	561352.530	32.493	VRD
1621	9606294.601	561352.405	32.674	VRD
1622	9606294.311	561351.420	32.681	VRD
1623	9606290.074	561353.919	32.850	PLZ
1624	9606286.399	561362.764	32.740	PLZ
1625	9606282.727	561362.720	32.705	PIST
1626	9606282.648	561363.549	32.802	JARD



*[Signature]*  
EDWARD CERON TORRES  
JEFE DE PROYECTO  
C.I.P. N° 61778

*[Signature]*  
ARQ. DAVID HECTOR TORRES PUENTE  
CAP. 5776  
JEFE DE SUPERVISIÓN

*[Signature]*  
CONSORCIO CONSULTOR SAUL GARRIDO  
C.P.C. MARIA LUISA CARBAJO MUÑOZ  
REPRESENTANTE COMÚN  
DNI N° 21546425

**CONFORME**

000989

1627	9606282.825	561364.322	32.890	VRD
1628	9606279.515	561357.362	32.773	VRD
1629	9606279.598	561357.386	32.931	VRD
1630	9606279.213	561356.570	32.958	VRD
1631	9606281.831	561356.524	32.898	PMT
1632	9606265.000	561361.153	33.177	PMT
1633	9606265.264	561362.129	33.129	PMT
1634	9606265.335	561362.145	32.968	VRD
1635	9606267.077	561367.923	32.963	VRD
1636	9606267.038	561367.973	33.112	VRD
1637	9606267.314	561368.757	32.984	JARD
1638	9606267.575	561369.580	33.152	VRD
1639	9606267.852	561370.453	33.156	VRD
1640	9606260.963	561370.391	33.197	PLZ
1641	9606257.511	561371.010	33.164	VRD
1642	9606257.550	561371.167	33.343	VRD
1643	9606258.022	561372.836	33.457	VRD
1644	9606258.442	561373.873	33.473	VRD
1645	9606258.686	561373.813	33.480	VRD
1646	9606257.679	561374.311	33.373	VRD
1647	9606257.317	561373.422	33.409	VRD
1648	9606256.782	561373.685	33.306	VRD
1649	9606256.540	561372.394	33.275	VRD
1650	9606259.278	561383.108	33.354	VRD
1651	9606260.785	561382.192	33.499	VRD
1652	9606254.048	561383.683	33.257	PIST
1653	9606253.676	561385.083	33.306	PIST
1654	9606252.605	561386.332	33.329	PIST
1655	9606251.503	561386.745	33.326	PIST
1656	9606251.260	561385.921	33.432	PIST
1657	9606252.393	561385.997	33.507	PIST
1658	9606252.321	561385.910	33.512	PLZ
1659	9606253.434	561383.788	33.455	PLZ
1660	9606252.309	561385.089	33.475	VRD
1661	9606251.868	561377.272	33.218	PIST
1662	9606250.193	561377.648	33.477	VERT
1663	9606255.163	561365.500	33.131	VERT
1664	9606255.109	561365.427	33.479	VERT
1665	9606254.817	561364.495	33.560	VERT
1666	9606253.556	561364.820	33.504	VERT
1667	9606253.967	561365.617	33.143	VERT
1668	9606256.985	561364.983	33.055	PMT
1669	9606259.126	561364.359	33.077	PMT
1670	9606247.911	561365.390	33.208	VRD
1671	9606247.004	561365.703	33.335	PLZ
1672	9606248.697	561367.192	33.284	PLZ
1673	9606246.140	561363.263	33.276	VRD
1674	9606245.312	561363.410	33.761	VRD



CONSORCIO CONSULTOR SAUL GARRIDO  
C.P.C. MARIA LUISA CARBAJO MUÑOZ  
REPRESENTANTE COMÚN  
DNI N° 21946425

EDWARD CERÓN TORRES  
JEFE DE PROYECTO  
C.I.P. N° 61778

ARQ. DAVID HECTOR TORRES PUENTE  
CAP. 5776  
JEFE DE SUPERVISIÓN



1675	9606246.266	561359.959	32.944	PIST
1676	9606251.415	561358.682	32.938	VRD
1677	9606251.392	561358.656	33.365	VRD
1678	9606251.052	561358.721	33.033	VRD
1679	9606252.494	561358.268	33.402	VRD
1680	9606249.875	561353.507	33.264	VRD
1681	9606250.809	561353.060	33.274	VRD
1682	9606249.731	561353.372	32.843	VRD
1683	9606249.638	561353.353	32.930	VRD
1684	9606244.969	561354.476	32.914	VRD
1685	9606244.737	561354.652	32.831	VRD
1686	9606243.284	561350.881	32.805	VRD
1687	9606241.886	561346.760	33.347	VRD
1688	9606240.168	561341.282	33.198	VRD
1689	9606240.457	561341.275	33.274	VRD
1690	9606240.206	561341.668	32.893	VRD
1691	9606239.047	561341.866	33.010	VRD
1692	9606238.033	561342.261	33.114	VRD
1693	9606244.848	561339.484	33.296	VRD
1694	9606245.158	561339.537	33.204	VRD
1695	9606245.315	561339.569	33.557	VRD
1696	9606246.500	561339.286	32.922	VRD
1697	9606238.453	561335.813	32.484	VRD
1698	9606236.296	561328.875	32.417	VRD
1699	9606235.199	561325.323	32.390	VRD
1700	9606239.890	561324.128	32.373	VRD
1701	9606240.131	561323.947	32.342	VRD
1702	9606240.262	561324.004	32.679	VRD
1703	9606241.363	561323.348	32.674	VRD
1704	9606233.901	561321.928	32.399	VRD
1705	9606232.041	561315.858	32.506	VRD
1706	9606231.961	561316.157	32.141	VRD
1707	9606230.636	561316.357	32.342	PLZ
1708	9606230.371	561310.587	32.120	VRD
1709	9606229.035	561311.018	32.360	VRD
1710	9606234.905	561308.780	32.070	VRD
1711	9606235.246	561308.516	32.052	VRD
1712	9606235.292	561308.448	32.274	VRD
1713	9606236.387	561308.036	32.374	VRD
1714	9606228.811	561305.916	32.088	VRD
1715	9606225.276	561294.376	31.842	VRD
1716	9606223.427	561289.665	31.812	VRD
1717	9606223.041	561289.322	31.873	PLZ
1718	9606223.186	561289.574	32.009	VRD
1719	9606222.178	561290.084	31.805	VRD
1720	9606223.340	561289.401	31.764	VRD
1721	9606228.298	561287.144	31.823	VRD
1722	9606229.406	561286.763	31.917	VRD

**CONFORME**

000988



EDWARD CERON TORRES  
JEFE DE PROYECTO  
C.I.P. N° 61778

CONSORCIO CONSULTOR SAUL GARRIDO  
C.P.C. MARIA LUISA CARBAJO MUÑOZ  
REPRESENTANTE COMÚN  
DNI N° 21546425

ARQ. DAVID HECTOR TORRES PUENTE  
CAP. 5776  
JEFE DE SUPERVISIÓN

**CONFORME**

000987

1723	9606222.351	561286.550	31.789	VRD
1724	9606220.984	561282.297	31.456	VRD
1725	9606221.016	561282.339	31.462	VRD
1726	9606219.163	561276.721	31.335	VRD
1727	9606218.141	561277.280	31.700	PLZ
1728	9606218.054	561277.530	31.705	VRD
1729	9606217.194	561278.615	31.665	VRD
1730	9606219.333	561277.123	31.339	VRD
1731	9606219.558	561276.775	31.422	VRD
1732	9606224.082	561274.834	31.469	VRD
1733	9606224.270	561274.738	31.654	VRD
1734	9606225.417	561274.303	31.693	VRD
1735	9606218.068	561273.240	31.244	VRD
1736	9606219.467	561260.310	31.117	VRD
1737	9606219.414	561260.206	31.394	VRD
1738	9606220.721	561259.857	31.459	VRD
1739	9606219.294	561260.390	31.149	VRD
1740	9606214.726	561261.401	31.158	VRD
1741	9606212.911	561257.158	31.089	VRD
1742	9606209.939	561246.936	30.955	VRD
1743	9606214.293	561245.625	30.990	VRD
1744	9606214.593	561245.618	30.893	VRD
1745	9606214.710	561245.527	31.263	VRD
1746	9606215.877	561245.015	31.209	VRD
1747	9606255.941	561391.072	33.190	VRD
1748	9606256.383	561391.995	33.171	VRD
1749	9606255.375	561392.339	33.520	VRD
1750	9606254.998	561391.380	33.242	VRD
1751	9606252.710	561391.236	33.257	BZN
1752	9606245.812	561395.383	33.411	VRD
1753	9606245.883	561395.896	33.256	VRD
1754	9606241.723	561390.141	33.203	VRD
1755	9606230.193	561393.860	32.366	VRD
1756	9606229.483	561394.194	32.330	VRD
1757	9606228.142	561394.022	32.162	VRD
1758	9606227.295	561392.925	32.134	VRD
1759	9606226.254	561390.406	32.069	PLZ
1760	9606220.149	561392.638	31.864	VRD
1761	9606213.974	561378.169	31.083	VRD
1762	9606219.299	561374.810	31.074	VRD
1763	9606211.219	561357.551	30.133	PLZ
1764	9606205.380	561359.937	30.048	PLZ
1765	9606205.249	561360.353	30.073	PLZ
1766	9606204.909	561343.766	29.442	PLZ
1767	9606199.133	561346.672	29.217	VRD
1768	9606197.732	561331.911	28.841	VRD
1769	9606192.538	561335.742	28.881	VRD
1770	9606183.749	561322.625	28.935	VRD



CONSORCIO CONSULTOR SAUL GARRIDO

C.P.C. MARIA LUISA CARBAJO MUÑOZ  
REPRESENTANTE COMÚN  
D.N.I. Nº 21546429

EDWARD CERON TORRES  
JEFE DE PROYECTO  
C.I.P. Nº 61778

ARQ. DAVID HECTOR TORRES PUENTE  
CAP. 5776  
JEFE DE SUPERVISIÓN

**CONFORME**

000986

1771	9606188.445	561318.417	28.974	PIST
1772	9606180.217	561304.643	28.651	PIST
1773	9606173.981	561306.453	28.819	PIST
1774	9606167.101	561292.606	28.639	PIST
1775	9606172.300	561288.582	28.555	PIST
1776	9606165.943	561275.985	27.572	PIST
1777	9606160.184	561279.525	27.521	PIST
1778	9606155.683	561272.196	26.664	PIST
1779	9606161.494	561268.685	26.759	PIST
1780	9606146.986	561261.637	24.972	PLZ
1781	9606151.388	561257.147	25.159	PLZ
1782	9606222.194	561398.243	32.303	PLZ
1783	9606233.098	561402.394	32.564	VRD
1784	9606232.321	561404.007	32.464	VRD
1785	9606232.515	561403.044	32.482	VRD
1786	9606233.719	561403.279	32.764	VRD
1787	9606234.200	561408.705	32.441	VRD
1788	9606228.929	561412.291	32.508	VRD
1789	9606236.365	561428.768	32.312	VRD
1790	9606242.250	561426.051	32.353	VRD
1791	9606238.758	561433.608	32.240	PLZ
1792	9606247.486	561438.352	32.358	PLZ
1793	9606249.647	561442.921	32.078	VRD
1794	9606244.209	561446.380	32.191	VRD
1795	9606243.371	561446.888	32.223	VRD
1796	9606248.088	561455.081	31.966	VRD
1797	9606253.634	561451.429	31.876	VRD
1798	9606252.961	561449.827	31.925	VRD
1799	9606256.328	561452.772	31.687	VRD
1800	9606258.711	561453.420	31.473	VRD
1801	9606260.208	561452.564	31.250	VRD
1802	9606261.020	561458.211	31.433	VRD
1803	9606259.928	561458.941	31.620	VRD
1804	9606258.808	561460.265	31.825	VRD
1805	9606259.049	561461.573	31.863	VRD
1806	9606259.548	561462.943	31.859	VRD
1807	9606252.627	561466.340	31.931	PLZ
1808	9606264.939	561495.438	32.044	VRD
1809	9606271.622	561491.081	32.225	PLZ
1810	9606271.686	561491.589	32.086	PLZ
1811	9606277.865	561505.500	32.017	VRD
1812	9606270.929	561508.192	32.146	PLZ
1813	9606276.615	561522.387	31.911	VRD
1814	9606284.233	561520.014	31.837	VRD
1815	9606283.792	561515.914	31.807	VRD
1816	9606284.799	561515.211	31.156	VRD
1817	9606287.323	561514.077	30.875	VRD
1818	9606285.829	561516.094	31.437	PLZ



CONSORCIO CONSULTOR SAUL GARRIDO

C.P.C. MARIA LUISA CARBAJO MUÑOZ  
REPRESENTANTE COMÚN  
DNI Nº 21546425

EDWARD CERON TORRES  
JEFE DE PROYECTO  
C.I.P. Nº 61778

ARQ. DAVID HECTOR TORRES PUENTE  
CAP. 5776  
JEFE DE SUPERVISIÓN

1819	9606288.097	561517.945	30.965	VRD
1820	9606288.816	561517.207	30.851	VRD
1821	9606291.455	561515.881	30.533	VRD
1822	9606286.287	561520.430	31.674	VRD
1823	9606289.694	561532.988	31.661	VRD
1824	9606283.065	561536.660	31.763	VRD
1825	9606284.985	561540.075	31.707	PLZ
1826	9606293.271	561552.113	31.358	PLZ
1827	9606298.951	561547.432	31.185	VRD
1828	9606290.677	561552.697	31.290	VRD
1829	9606300.208	561570.220	30.610	PLZ
1830	9606310.856	561561.568	30.518	VRD
1831	9606314.371	561565.357	30.318	PLZ
1832	9606318.737	561570.399	29.937	VRD
1833	9606312.730	561576.932	30.153	VRD
1834	9606335.168	561586.683	28.163	VRD
1835	9606335.112	561586.725	28.170	VRD
1836	9606331.462	561593.313	27.972	VRD
1837	9606334.206	561563.046	31.504	TN
1838	9606322.728	561523.812	30.771	PIST
1839	9606327.614	561520.716	30.751	PIST
1840	9606326.100	561516.474	30.436	PLZ
1841	9606324.951	561513.842	30.232	PLZ
1842	9606317.364	561511.531	29.682	VERT
1843	9606316.240	561508.660	29.509	VERT
1844	9606312.821	561507.166	29.384	VERT
1845	9606309.026	561504.713	28.916	VRD
1846	9606307.903	561505.288	29.195	VRD
1847	9606307.419	561505.818	29.352	PLZ
1848	9606316.746	561496.804	28.762	VRD
1849	9606316.463	561495.421	28.788	VRD
1850	9606317.294	561491.658	27.301	TN
1851	9606318.114	561487.325	26.290	TN
1852	9606321.078	561486.959	24.836	TN
1853	9606308.072	561484.517	28.905	VRD
1854	9606300.908	561488.176	28.875	VRD
1855	9606306.132	561481.798	28.943	PLZ
1856	9606295.608	561464.170	29.181	VRD
1857	9606290.034	561467.381	29.212	VRD
1858	9606292.799	561457.154	29.253	PLZ
1859	9606289.319	561453.474	29.221	PLZ
1860	9606286.379	561448.531	29.368	VRD
1861	9606286.233	561446.261	29.284	VRD
1862	9606287.273	561444.485	29.161	VRD
1863	9606289.076	561442.734	28.963	VRD
1864	9606280.902	561450.012	29.560	VRD
1865	9606281.442	561451.166	29.425	VRD
1866	9606278.999	561449.542	29.677	VRD

**CONFORME**

000985



CONSORCIO CONSULTOR SAUL GARRIDO  
 C.P.C. MARIA LUISA CARBAJO MUÑOZ  
 REPRESENTANTE COMUN  
 DNI N° 21546425

EDWARD CERON TORRES  
 JEFE DE PROYECTO  
 C.I.P. N° 61778

ARQ. DAVID HECTOR TORRES PUENTE  
 CAP. 5776  
 JEFE DE SUPERVISIÓN

1867	9606276.283	561450.312	29.823	VRD
1868	9606273.765	561451.442	29.990	VRD
1869	9606273.862	561451.444	29.989	VRD
1870	9606274.181	561443.766	29.727	VRD
1871	9606280.783	561440.339	29.379	BZN
1872	9606282.582	561438.417	29.228	VRD
1873	9606281.641	561439.111	29.321	VRD
1874	9606281.953	561437.169	29.375	VRD
1875	9606285.320	561433.182	29.294	VRD
1876	9606286.574	561434.336	29.016	VRD
1877	9606287.744	561433.853	28.811	VRD
1878	9606283.695	561429.916	29.636	VRD
1879	9606279.365	561432.540	29.826	VRD
1880	9606277.704	561429.872	30.259	PLZ
1881	9606277.863	561429.039	30.203	PLZ
1882	9606275.884	561421.071	31.045	TN
1883	9606273.608	561422.385	31.441	PIST
1884	9606273.561	561422.229	31.094	PIST
1885	9606277.860	561420.043	31.085	VRD
1886	9606265.167	561407.294	32.732	PLZ
1887	9606262.440	561401.521	32.736	PLZ
1888	9606262.223	561402.015	32.692	VRD
1889	9606268.226	561400.849	32.664	VRD
1890	9606292.283	561439.967	28.875	VRD
1891	9606298.581	561434.056	28.607	VRD
1892	9606290.708	561431.959	28.764	PLZ
1893	9606308.359	561421.360	28.236	VRD
1894	9606308.306	561421.342	28.389	VRD
1895	9606307.649	561420.400	28.420	VRD
1896	9606311.539	561426.431	28.231	VRD
1897	9606312.331	561427.546	28.153	VRD
1898	9606314.089	561419.180	28.233	BZN
1899	9606323.281	561420.010	28.286	PLZ
1900	9606324.216	561411.936	28.450	PLZ
1901	9606327.297	561416.776	28.510	VRD
1902	9606327.634	561417.832	28.317	VRD
1903	9606335.973	561415.643	28.833	VRD
1904	9606335.122	561414.771	28.850	VRD
1905	9606333.890	561413.070	28.747	VRD
1906	9606331.075	561407.787	28.643	VRD
1907	9606330.463	561406.870	28.839	VRD
1908	9606348.819	561397.252	28.918	PLZ
1909	9606360.656	561390.181	28.693	VRD
1910	9606360.123	561389.219	29.013	VRD
1911	9606364.661	561394.750	28.737	VRD
1912	9606365.279	561396.310	29.022	VRD
1913	9606378.322	561379.899	28.090	PLZ
1914	9606380.850	561379.442	28.032	B1

**CONFORME**

000984



*[Signature]*  
 EDWARD CERÓN TORRES  
 JEFE DE PROYECTO  
 C.I.P. N° 61778

CONSORCIO CONSULTOR SAUL GARRIDO  
*[Signature]*  
 C.P.C. MARIA LUISA CARBAJO MUÑOZ  
 REPRESENTANTE COMÚN  
 DNI N° 21546425

*[Signature]*  
 ARQ. DAVID HECTOR TORRES PUENTE  
 CAP. 5776  
 JEFE DE SUPERVISIÓN

1915	9606380.806	561379.510	28.026	B1
1916	9606380.815	561379.490	28.023	B1
1917	9606380.521	561378.342	28.016	VRD
1918	9606382.782	561376.494	27.958	VRD
1919	9606384.244	561373.846	27.960	VRD
1920	9606384.545	561370.848	27.778	VRD
1921	9606384.558	561371.270	27.810	VRD
1922	9606383.779	561368.464	27.749	VRD
1923	9606388.874	561366.975	27.810	VRD
1924	9606390.516	561372.998	27.878	VRD
1925	9606389.699	561375.864	27.907	VRD
1926	9606387.763	561379.439	28.032	VRD
1927	9606384.422	561382.777	28.031	VRD
1928	9606390.473	561381.280	27.939	VRD
1929	9606392.023	561379.229	27.906	VRD
1930	9606391.852	561377.876	27.561	VRD
1931	9606388.043	561377.733	28.035	BZN
1932	9606380.236	561357.609	27.710	VRD
1933	9606386.206	561355.041	27.664	VRD
1934	9606385.256	561355.371	27.624	VRD
1935	9606412.936	561344.986	26.900	VRD
1936	9606412.541	561345.656	27.147	VRD
1937	9606423.587	561342.971	27.899	VRD
1938	9606419.599	561342.579	27.377	VRD
1939	9606424.837	561348.593	27.753	VRD
1940	9606426.265	561349.084	27.840	VRD
1941	9606426.707	561348.989	27.844	VRD
1942	9606426.196	561349.791	27.985	VRD
1943	9606427.902	561348.241	27.895	VRD
1944	9606430.415	561346.897	28.053	PLZ
1945	9606437.219	561338.415	28.108	VRD
1946	9606439.370	561342.087	28.123	VRD
1947	9606451.719	561334.058	28.433	PLZ
1948	9606449.731	561330.695	28.324	VRD
1949	9606449.311	561330.143	28.481	VRD
1950	9606460.027	561320.797	27.654	VRD
1951	9606465.888	561314.357	27.060	VRD
1952	9606468.536	561316.242	27.013	VRD
1953	9606471.840	561305.589	26.244	VRD
1954	9606472.038	561305.079	26.179	VRD
1955	9606470.952	561305.176	26.137	VRD
1956	9606475.340	561306.528	26.053	VRD
1957	9606505.919	561285.741	27.262	BM
1958	9606507.991	561288.577	27.120	VRD
1959	9606507.556	561286.506	27.279	VRD
1960	9606503.406	561288.864	26.753	VERT
1961	9606411.798	561363.158	19.649	TN
1962	9606404.249	561355.913	21.979	TN

**CONFORME**

000583



CONSORCIO CONSULTOR SAUL GARRIDO

C.P.C. MARIA LUISA CARBAJO MUÑOZ  
 REPRESENTANTE COMÚN  
 DNI Nº 21546429

EDWARD CEBALON TORRES  
 JEFE DE PROYECTO  
 G.I.P. Nº 61778

ARQ. DAVID HECTOR TORRES PUENTE  
 CAP. 5776  
 JEFE DE SUPERVISIÓN

**CONFORME**

000582

1963	9606417.313	561369.596	18.479	TN
1964	9606423.674	561366.300	20.740	VRD
1965	9606422.974	561366.956	20.942	VRD
1966	9606427.814	561362.675	20.730	VRD
1967	9606428.367	561361.945	20.943	VRD
1968	9606436.114	561378.575	18.097	VRD
1969	9606439.970	561375.187	18.125	VRD
1970	9606440.615	561374.332	18.427	VRD
1971	9606435.304	561379.428	18.317	VRD
1972	9606434.741	561384.497	16.070	TN
1973	9606430.500	561388.493	16.424	TN
1974	9606445.970	561398.252	13.855	TN
1975	9606447.532	561396.593	13.765	TN
1976	9606449.405	561393.766	15.192	VRD
1977	9606450.058	561392.958	15.038	VRD
1978	9606453.952	561389.456	15.195	VRD
1979	9606447.316	561386.184	16.139	BZN
1980	9606458.860	561394.414	14.157	VRD
1981	9606459.714	561393.708	14.282	VRD
1982	9606458.860	561394.724	14.006	VRD
1983	9606455.246	561398.167	14.593	VRD
1984	9606454.330	561398.959	14.762	VRD
1985	9606460.613	561403.301	13.623	VRD
1986	9606463.458	561399.076	13.074	VRD
1987	9606457.752	561406.969	11.557	TN
1988	9606459.006	561405.659	11.580	TN
1989	9606469.614	561412.531	11.179	TN
1990	9606467.833	561414.241	11.212	TN
1991	9606477.634	561414.519	10.719	VRD
1992	9606478.526	561413.285	10.039	VRD
1993	9606481.802	561408.323	10.020	VRD
1994	9606482.644	561408.842	9.870	VRD
1995	9606483.579	561407.206	9.966	VRD
1996	9606482.022	561407.825	10.047	VRD
1997	9606482.538	561407.098	10.047	VRD
1998	9606483.174	561405.965	9.919	VRD
1999	9606484.465	561403.763	9.909	VRD
2000	9606485.317	561404.318	9.899	VRD
2001	9606484.383	561409.469	9.697	PIST
2002	9606483.281	561410.448	9.787	B1
2003	9606483.273	561410.461	9.789	B1
2004	9606483.277	561410.450	9.799	B1
2005	9606481.043	561415.207	9.761	PIST
2006	9606480.497	561416.263	9.920	PIST
2007	9606478.395	561416.087	10.119	VRD
2008	9606478.914	561415.323	10.041	VRD
2009	9606477.899	561416.665	10.257	VRD
2010	9606477.425	561417.474	10.146	VRD



*[Signature]*  
EDWARD CERÓN TORRES  
JEFE DE PROYECTO  
C.I.P. N° 61778

CONSORCIO CONSULTOR SAUL GARRIDO

*[Signature]*  
C.P.C. MARIA LUISA CARBAJO MUÑOZ  
REPRESENTANTE COMÚN  
DNI N° 21546425

*[Signature]*  
ARQ. DAVID HECTOR TORRES PUENTE  
CAP. 5776  
JEFE DE SUPERVISIÓN

2011	9606479.396	561417.710	9.980	CALLE
2012	9606480.482	561415.963	9.913	CALLE
2013	9606485.383	561419.210	9.689	CALLE
2014	9606483.996	561419.597	9.743	CALLE
2015	9606478.094	561430.998	10.199	CALLE
2016	9606471.873	561430.085	10.307	CALLE
2017	9606467.224	561448.549	10.227	CALLE
2018	9606462.121	561446.251	10.178	CALLE
2019	9606454.709	561458.490	10.136	CALLE
2020	9606458.470	561463.525	10.071	CALLE
2021	9606453.581	561472.589	10.353	CALLE
2022	9606457.641	561453.112	10.527	PLZ
2023	9606471.540	561430.020	10.358	PLZ
2024	9606490.553	561410.516	9.534	CALLE
2025	9606485.646	561407.325	9.616	CALLE
2026	9606487.517	561403.606	9.846	PLZ
2027	9606494.896	561392.015	9.741	CALLE
2028	9606500.302	561394.473	9.799	CALLE
2029	9606497.941	561383.499	10.083	VRD
2030	9606497.137	561382.954	10.158	VRD
2031	9606502.451	561378.098	10.200	PMT
2032	9606506.109	561373.198	9.794	CAR
2033	9606506.731	561367.297	10.043	CAR
2034	9606508.405	561363.861	9.955	CAR
2035	9606504.314	561361.162	10.583	CAR
2036	9606499.953	561361.693	10.903	CAR
2037	9606496.273	561361.379	11.319	CAR
2038	9606491.560	561362.031	11.571	CAR
2039	9606508.949	561350.846	11.257	TN
2040	9606506.571	561349.086	11.319	TN
2041	9606502.836	561346.768	11.565	TN
2042	9606497.891	561345.526	12.644	TN
2043	9606516.025	561334.168	12.473	TN
2044	9606513.176	561332.514	12.507	TN
2045	9606509.844	561330.431	12.585	TN
2046	9606524.178	561317.260	13.539	CAR
2047	9606519.329	561311.655	13.943	CAR
2048	9606514.837	561308.576	16.100	TN
2049	9606512.072	561309.998	18.445	VERT
2050	9606512.153	561308.844	17.850	TN
2051	9606510.862	561306.677	19.147	TN
2052	9606509.119	561302.607	21.980	TN
2053	9606510.611	561298.272	22.930	TN
2054	9606507.155	561295.438	25.320	TN
2055	9606522.736	561302.845	14.533	TN
2056	9606527.089	561305.204	14.572	TN
2057	9606531.160	561307.621	14.607	TN
2058	9606541.052	561296.742	15.662	TN

**CONFORME**

000981



CONSORCIO CONSULTOR SAUL GARRIDO  
 C.P.C. MARÍA LUISA CARBAJO MUÑOZ  
 REPRESENTANTE COMÚN  
 DNI N° 21969429

EDWARD GERON TORRES  
 JEFE DE PROYECTO  
 C.I.P. N° 61778

ARQ. DAVID HECTOR TORRES PUENTE  
 CAP. 5776  
 JEFE DE SUPERVISIÓN



**CONFORME**

2059	9606537.289	561294.192	15.723	TN
2060	9606534.341	561290.621	15.808	TN
2061	9606548.831	561286.611	16.593	TN
2062	9606546.769	561283.212	16.821	TN
2063	9606540.993	561279.895	16.864	TN
2064	9606541.324	561276.284	18.604	TN
2065	9606567.191	561271.218	17.827	TN
2066	9606563.916	561259.870	18.966	TN
2067	9606563.992	561260.414	18.293	TN
2068	9606590.903	561251.588	19.247	TN
2069	9606585.019	561244.881	19.353	TN
2070	9606600.189	561240.649	19.794	TN
2071	9606596.321	561236.140	19.972	TN
2072	9606590.912	561230.291	22.601	TN
2073	9606620.353	561226.911	20.357	TN
2074	9606613.614	561219.971	20.396	TN
2075	9606636.067	561208.642	20.481	TN
2076	9606630.140	561203.495	20.400	TN
2077	9606647.374	561206.126	20.189	TN
2078	9606640.865	561200.561	20.454	TN
2079	9606636.122	561196.211	20.538	TN
2080	9606633.873	561196.167	20.973	PLZ
2081	9606627.913	561201.886	21.218	PLZ
2082	9606624.698	561198.833	21.472	PLZ
2083	9606613.649	561209.241	21.706	PLZ
2084	9606616.805	561211.919	21.554	PLZ
2085	9606609.772	561218.325	21.730	PLZ
2086	9606601.065	561223.963	21.998	PLZ
2087	9606589.646	561211.780	22.191	PLZ
2088	9606597.342	561206.278	22.188	PLZ
2089	9606585.907	561192.360	22.367	PLZ
2090	9606581.892	561193.273	22.592	PLZ
2091	9606586.613	561193.619	22.342	TN
2092	9606578.244	561202.433	22.426	TN
2093	9606584.879	561210.991	22.358	TN
2094	9606591.875	561207.918	22.147	TN
2095	9606577.205	561181.985	22.246	TN
2096	9606574.497	561179.788	22.532	PLZ
2097	9606569.349	561175.320	22.316	TN
2098	9606560.033	561183.933	22.428	TN
2099	9606563.026	561192.145	22.525	TN
2100	9606545.638	561195.611	23.684	TN
2101	9606530.233	561205.784	23.931	TN
2102	9606535.228	561218.621	24.732	TN
2103	9606524.470	561226.760	25.150	TN
2104	9606529.295	561234.393	26.047	TN
2105	9606525.572	561244.873	27.043	TN
2106	9606536.683	561264.244	25.386	TN

000980



*[Signature]*  
EDWARD CERON TORRES  
JEFE DE PROYECTO  
C.I.P. N° 61778

CONSORCIO CONSULTOR SAUL GARRIDO

*[Signature]*  
C.P.C. MARÍA LUISA CARBAJO MUÑOZ  
REPRESENTANTE COMÚN  
ONI N° 21546425

*[Signature]*  
ARQ. DAVID HECTOR TORRES PUENTE  
CAP. 5776  
JEFE DE SUPERVISIÓN

**CONFORME**

000979

2107	9606559.634	561254.022	24.135	TN
2108	9606550.554	561236.587	24.630	TN
2109	9606581.242	561242.758	22.387	TN
2110	9606569.265	561221.112	22.900	TN
2111	9606516.225	561364.348	9.717	CAR
2112	9606511.015	561361.885	9.816	CAR
2113	9606510.050	561358.557	10.383	TN
2114	9606515.449	561345.589	9.798	TN
2115	9606518.159	561347.106	9.374	CAR
2116	9606523.418	561349.159	9.124	CAR
2117	9606529.167	561343.678	9.495	PMT
2118	9606534.008	561343.431	9.242	TN
2119	9606529.054	561339.081	8.765	CAR
2120	9606524.236	561335.484	8.953	CAR
2121	9606522.138	561333.453	9.275	TN
2122	9606530.761	561319.938	9.192	TN
2123	9606530.430	561318.725	10.349	TN
2124	9606533.287	561321.177	8.300	CAR
2125	9606538.072	561324.235	8.131	CAR
2126	9606538.375	561325.276	8.752	TN
2127	9606544.978	561329.161	8.742	TN
2128	9606554.145	561317.678	8.502	TN
2129	9606549.526	561312.944	8.457	TN
2130	9606548.773	561312.748	8.016	CAR
2131	9606545.244	561308.147	8.021	CAR
2132	9606544.561	561307.921	8.263	TN
2133	9606543.426	561306.954	8.629	TN
2134	9606542.519	561306.479	9.762	TN
2135	9606556.278	561308.156	8.646	PLZ
2136	9606561.245	561292.432	8.303	TN
2137	9606562.680	561293.790	7.794	CAR
2138	9606566.160	561298.505	7.684	CAR
2139	9606566.795	561298.851	8.216	TN
2140	9606567.393	561300.851	8.327	PMT
2141	9606570.010	561301.911	8.543	TN
2142	9606585.348	561290.344	7.986	TN
2143	9606583.004	561287.389	7.984	TN
2144	9606582.949	561287.052	7.462	CAR
2145	9606580.412	561280.918	7.466	CAR
2146	9606578.360	561279.081	8.057	RLL
2147	9606576.503	561278.859	9.080	RLL
2148	9606589.370	561284.007	8.143	PLZ
2149	9606456.746	561250.721	30.546	TUM
2150	9606465.574	561247.629	30.262	TN
2151	9606275.529	561339.720	32.238	BM
2152	9606258.452	561228.960	28.803	BM
2153	9606365.874	561194.138	28.486	BM
2154	9606460.327	561273.823	29.116	VERT



CONSORCIO CONSULTOR SAUL GARRIDO  
*[Signature]*  
C.P.C. MARÍA LUISA CARBAJO MUÑOZ  
REPRESENTANTE COMÚN  
DNI Nº 21946429

*[Signature]*  
EDWARD CERRÓN TORRES  
JEFE DE PROYECTO  
C.I.P. N° 61778

*[Signature]*  
ARQ. DAVID HECTOR TORRES PUENTE  
CAP. 5776  
JEFE DE SUPERVISIÓN

CONFORME

2155	9606460.320	561273.827	29.119	VERT
2156	9606512.801	561264.681	26.555	OJO
2157	9606508.975	561266.211	27.922	TN
2158	9606508.525	561273.986	27.469	TN
2159	9606512.522	561272.714	25.970	TN
2160	9606508.970	561281.554	27.415	TN
2161	9606513.834	561281.474	25.329	TN
2162	9606601.035	561278.506	7.918	TN
2163	9606599.437	561275.148	7.869	TN
2164	9606598.196	561274.752	7.343	CAR
2165	9606595.812	561269.477	7.394	CAR
2166	9606592.413	561267.907	8.014	TN
2167	9606592.239	561265.869	9.796	TN
2168	9606604.658	561256.790	9.205	TN
2169	9606605.792	561258.450	8.121	TN
2170	9606606.567	561261.658	7.287	CAR
2171	9606611.203	561264.684	7.166	CAR
2172	9606612.261	561265.610	7.737	TN
2173	9606613.175	561269.084	7.856	TN
2174	9606622.485	561259.715	7.706	PLZ
2175	9606629.043	561255.642	7.663	PMT
2176	9606630.951	561256.644	7.507	TN
2177	9606629.562	561254.194	7.510	TN
2178	9606628.980	561253.299	6.913	CAR
2179	9606626.597	561245.940	7.215	CAR
2180	9606626.311	561243.515	8.645	TN
2181	9606644.769	561231.240	8.043	TN
2182	9606645.155	561231.647	7.294	TN
2183	9606645.804	561232.702	6.704	CAR
2184	9606648.721	561237.870	6.885	CAR
2185	9606654.330	561247.557	6.986	TN
2186	9606655.694	561235.507	7.756	PLZ
2187	9606683.565	561239.903	8.582	TN
2188	9606679.601	561230.245	7.991	TN
2189	9606673.587	561222.523	7.807	TN
2190	9606673.130	561220.453	6.831	CAR
2191	9606671.386	561213.551	6.283	CAR
2192	9606669.916	561211.323	6.530	TN
2193	9606671.971	561208.201	7.948	TN
2194	9606680.053	561200.504	7.498	TN
2195	9606682.244	561203.448	6.939	TN
2196	9606682.934	561204.038	6.225	CAR
2197	9606686.356	561207.982	6.269	CAR
2198	9606687.548	561209.770	7.162	TN
2199	9606689.844	561214.502	8.117	TN
2200	9606701.033	561238.051	7.962	TN
2201	9606693.910	561208.505	6.820	PMT
2202	9606696.343	561205.981	6.631	PLZ

000978



EDWARD CEPALÓN TORRES  
JEFE DE PROYECTO  
C.I.P. N° 61778

CONSORCIO CONSULTOR SAUL GARRIDO

C.P.C. MARIA LUISA CARBAJO MUÑOZ  
REPRESENTANTE COMÚN  
DNI N° 21546425

ARQ. DAVID HECTOR TORRES FUENTE  
CAP. 5776  
JEFE DE SUPERVISIÓN

**CONFORME**

000977

2203	9606728.419	561230.487	7.920	TN
2204	9606718.005	561209.599	7.882	TN
2205	9606710.110	561193.153	6.985	TN
2206	9606709.427	561189.974	5.938	CAR
2207	9606707.945	561186.103	5.934	CAR
2208	9606705.717	561185.812	6.460	TN
2209	9606704.412	561184.131	7.691	TN
2210	9606728.390	561171.116	5.746	MURO
2211	9606728.392	561171.117	5.742	MURO
2212	9606728.050	561170.830	6.182	MURO
2213	9606727.236	561168.941	8.082	TN
2214	9606727.582	561171.128	6.069	TN
2215	9606727.703	561172.062	5.707	CAR
2216	9606732.178	561175.411	5.531	CAR
2217	9606733.082	561175.731	5.980	TN
2218	9606736.455	561176.438	6.158	PLZ
2219	9606744.564	561196.229	6.767	TN
2220	9606756.367	561223.750	7.695	TN
2221	9606773.899	561212.990	8.455	TN
2222	9606764.572	561198.344	8.347	TN
2223	9606757.017	561171.717	6.547	TN
2224	9606751.668	561163.749	6.377	TN
2225	9606748.315	561163.935	5.406	CAR
2226	9606745.883	561158.550	6.005	CAR
2227	9606745.540	561158.393	6.080	MURO
2228	9606761.904	561158.028	6.651	PMT
2229	9606766.721	561142.308	5.431	MURO
2230	9606766.598	561141.924	5.822	MURO
2231	9606760.874	561136.332	10.224	TN
2232	9606764.910	561139.556	7.004	TN
2233	9606768.460	561142.027	5.345	TN
2234	9606768.452	561141.902	5.327	CAR
2235	9606771.732	561146.411	5.133	CAR
2236	9606777.118	561161.242	5.251	TN
2237	9606789.208	561136.254	5.533	BM
2238	9606789.209	561136.252	5.542	BM
2239	9606789.190	561137.849	5.468	VRD
2240	9606788.140	561136.342	5.310	VRD
2241	9606800.002	561127.507	5.544	VRD
2242	9606801.114	561129.007	5.567	VRD
2243	9606808.747	561126.244	5.461	VRD
2244	9606808.470	561128.672	5.489	VRD
2245	9606812.652	561133.913	5.394	VRD
2246	9606815.582	561133.573	5.368	VRD
2247	9606815.572	561133.568	5.374	VRD
2248	9606814.933	561133.562	5.385	I12
2249	9606783.427	561130.084	5.462	VRD
2250	9606782.523	561128.718	5.501	VRD



CONSORCIO CONSULTOR SAUL GARRIDO  
C.P.C. MARÍA LUISA CARBAJO MUÑOZ  
REPRESENTANTE COMÚN  
DNI N° 21546429

EDWARD CERON TORRES  
JEFE DE PROYECTO  
C.I.P. N° 61778

ARQ. DAVID HECTOR TORRES PUENTE  
CAP. 5776  
JEFE DE SUPERVISIÓN

1

2

3

FOR THE DIRECTOR  
OF THE BUREAU OF  
LAND MANAGEMENT  
WASHINGTON, D.C.

CONFORME

000976

2251	9606779.674	561124.975	7.107	TN
2252	9606794.158	561121.897	5.555	TN
2253	9606793.098	561120.511	5.580	TN
2254	9606793.525	561120.132	5.544	TN
2255	9606791.819	561121.171	5.565	TN
2256	9606787.296	561107.680	6.293	TN
2257	9606785.492	561107.962	6.328	TN
2258	9606780.393	561109.327	7.429	TN
2259	9606780.665	561115.227	7.493	TN
2260	9606774.478	561115.732	10.252	TN
2261	9606774.481	561110.022	10.650	TN
2262	9606800.313	561114.910	5.624	VRD
2263	9606801.472	561116.384	5.558	VRD
2264	9606802.939	561114.701	5.592	PMT
2265	9606806.808	561111.001	5.520	VRD
2266	9606804.544	561107.617	5.616	VRD
2267	9606804.022	561104.340	5.609	VRD
2268	9606807.090	561103.565	5.533	VRD
2269	9606807.115	561103.664	5.595	PLZ
2270	9606806.706	561100.527	5.570	VRD
2271	9606803.892	561100.991	5.622	VRD
2272	9606827.055	561098.453	5.319	PIST
2273	9606832.836	561097.691	5.588	VRD
2274	9606834.752	561097.176	5.594	VRD
2275	9606836.321	561122.841	5.330	VRD
2276	9606830.979	561124.254	5.155	PIST
2277	9606823.506	561124.042	5.310	PIST
2278	9606823.808	561124.103	5.291	PIST
2279	9606823.139	561124.165	5.283	PIST
2280	9606840.340	561186.266	4.889	PIST
2281	9606841.476	561192.424	4.911	PIST
2282	9606842.003	561192.650	3.343	PIST
2283	9606842.083	561196.956	4.882	PIST
2284	9606842.537	561196.456	3.226	PIST
2285	9606848.339	561195.463	4.851	BM
2286	9606856.292	561194.281	2.994	ALI
2287	9606856.222	561194.397	4.528	ALI
2288	9606848.682	561191.380	3.022	ALI
2289	9606848.716	561191.310	4.584	ALI
2290	9606856.534	561190.184	2.937	ALI
2291	9606856.539	561190.023	4.535	ALI
2292	9606870.151	561188.030	2.952	ALI
2293	9606870.078	561187.734	4.552	ALI
2294	9606870.124	561187.775	4.555	ALI
2295	9606827.912	561206.026	4.878	PIST
2296	9606827.101	561206.168	4.402	PIST
2297	9606826.678	561206.255	5.156	PIST
2298	9606823.216	561205.719	4.537	PIST



EDWARD CERÓN TORRES  
JEFE DE PROYECTO  
C.I.P. N° 61778

CONSORCIO CONSULTOR SAUL GARRIDO

C.P.C. MARÍA LUISA CARBAJO MUÑOZ  
REPRESENTANTE COMÚN  
DNI N° 21546429

ARQ. DAVID HECTOR TORRES PUENTE  
CAP. 5776  
JEFE DE SUPERVISIÓN

CONFORME

000975

2299	9606823.546	561206.036	5.121	PIST
2300	9606821.176	561192.657	3.706	PIST
2301	9606821.449	561190.316	5.207	PIST
2302	9606824.056	561190.333	5.158	PIST
2303	9606824.689	561190.405	4.311	PIST
2304	9606825.613	561190.117	4.692	PIST
2305	9606815.531	561213.407	5.549	TN
2306	9606812.751	561212.902	3.760	TN
2307	9606796.411	561213.208	3.567	TN
2308	9606795.743	561233.295	3.282	TN
2309	9606816.807	561237.127	3.347	TN
2310	9606826.001	561248.657	5.055	TN
2311	9606829.696	561246.357	5.160	VRD
2312	9606832.444	561245.652	5.144	VRD
2313	9606833.764	561245.310	4.878	PIST
2314	9606848.653	561241.288	4.915	PIST
2315	9606853.639	561240.181	5.176	PIST
2316	9606861.640	561298.232	5.005	PIST
2317	9606862.269	561298.141	5.194	PIST
2318	9606857.568	561300.356	4.902	PIST
2319	9606842.847	561304.537	5.533	PIST
2320	9606842.081	561304.802	5.205	PIST
2321	9606841.609	561304.909	5.724	VRD
2322	9606838.720	561305.529	5.682	VRD
2323	9606835.852	561306.566	5.504	TN
2324	9606830.706	561308.740	3.956	TN
2325	9606809.236	561312.860	3.353	TN
2326	9606799.057	561314.676	3.393	TN
2327	9606808.099	561372.521	3.647	TN
2328	9606829.570	561369.059	3.514	TN
2329	9606839.821	561366.943	3.691	TN
2330	9606843.288	561365.412	4.997	TN
2331	9606847.709	561364.282	5.137	VRD
2332	9606850.360	561363.641	5.145	VRD
2333	9606851.675	561363.319	4.886	PIST
2334	9606866.857	561360.789	4.926	PIST
2335	9606872.206	561360.739	5.163	VRD
2336	9606881.787	561416.758	5.084	VRD
2337	9606875.762	561418.154	4.924	PIST
2338	9606861.049	561424.307	4.902	PIST
2339	9606860.326	561424.734	4.656	PIST
2340	9606859.901	561424.871	5.162	VRD
2341	9606857.161	561425.367	5.146	VRD
2342	9606845.039	561428.706	5.137	TN
2343	9606842.235	561431.310	4.313	TN
2344	9606818.864	561432.501	4.696	TN
2345	9606873.260	561542.810	3.598	TN
2346	9606818.654	561480.423	5.114	TN



CONSORCIO CONSULTOR SAUL GARRIDO

C.P.C. MARIA LUISA CARBAJO MUÑOZ  
REPRESENTANTE COMÚN  
DNI N° 21546429

EDWARD CERON TORRES  
JEFE DE PROYECTO  
C.I.P. N° 61778

ARQ. DAVID HECTOR TORRES PUENTE  
CAP. 5776  
JEFE DE SUPERVISIÓN

**CONFORME**

000974

2347	9606843.764	561478.528	5.280	TN
2348	9606864.637	561477.161	5.131	TN
2349	9606867.712	561477.453	5.172	TN
2350	9606868.260	561477.310	4.702	TN
2351	9606869.139	561477.233	4.871	TN
2352	9606884.413	561477.448	4.912	TN
2353	9606885.738	561477.373	5.000	TN
2354	9606891.758	561477.247	5.197	TN
2355	9606893.630	561477.114	5.152	TN
2356	9606904.664	561543.707	5.172	TN
2357	9606903.386	561543.454	5.160	TN
2358	9606894.911	561544.937	4.980	TN
2359	9606887.925	561546.050	5.105	TN
2360	9606887.472	561546.591	5.107	TN
2361	9606886.772	561546.314	5.066	TN
2362	9606880.003	561548.795	4.971	TN
2363	9606879.152	561548.752	4.775	TN
2364	9606878.761	561548.881	5.279	TN
2365	9606875.918	561549.660	5.223	TN
2366	9606876.278	561553.828	5.186	TN
2367	9606878.249	561552.089	5.218	TN
2368	9606878.163	561552.090	5.214	TN
2369	9606878.541	561552.529	5.218	TN
2370	9606872.645	561552.206	4.990	TN
2371	9606878.199	561565.283	5.120	TN
2372	9606878.501	561566.680	5.130	TN
2373	9606880.686	561566.515	5.194	TN
2374	9606881.521	561567.737	5.200	TN
2375	9606878.825	561568.319	5.127	TN
2376	9606865.800	561569.174	4.284	TN
2377	9606865.591	561564.522	5.405	PLZ
2378	9606865.337	561566.268	5.628	PLZ
2379	9606865.337	561566.266	5.622	PLZ
2380	9606872.143	561549.607	4.946	PLZ
2381	9606846.881	561553.872	4.853	PLZ
2382	9606818.620	561558.663	4.954	PLZ
2383	9606789.852	561563.424	5.676	PLZ
2384	9606761.858	561568.290	5.497	PLZ
2385	9606732.938	561573.112	5.629	PLZ
2386	9606732.196	561573.788	5.173	PLZ
2387	9606704.526	561577.958	5.541	PLZ
2388	9606696.839	561578.166	5.988	TN
2389	9606699.530	561597.642	5.223	TN
2390	9606728.919	561531.056	5.771	TN
2391	9606752.811	561520.999	5.659	TN
2392	9606778.662	561516.013	5.957	TN
2393	9606779.565	561478.771	4.343	TN
2394	9606789.471	561478.093	4.325	TN



EDWARD CERÓN TORRES  
JEFE DE PROYECTO  
C.I.P. N° 61778

CONSORCIO CONSULTOR SAUL GARRIDO

C.P.C. MARÍA LUISA CARBAJO MUÑOZ  
REPRESENTANTE COMUN  
ONI N° 21546425

ARQ. DAVID HECTOR TORRES POLINE  
CAP. 5776  
JEFE DE SUPERVISIÓN



CONFORME

000973

2395	9606795.002	561473.925	4.201	TN
2396	9606802.016	561464.507	4.328	TN
2397	9606809.517	561458.569	3.751	TN
2398	9606813.676	561451.477	3.831	TN
2399	9606811.147	561441.865	4.181	TN
2400	9606814.546	561426.523	3.967	TN
2401	9606814.565	561426.578	3.954	TN
2402	9606817.563	561416.450	3.944	TN
2403	9606819.007	561404.824	3.846	TN
2404	9606815.080	561393.285	3.604	TN
2405	9606807.320	561384.436	3.580	TN
2406	9606802.074	561383.767	3.927	TN
2407	9606797.618	561386.773	3.678	TN
2408	9606788.215	561387.116	3.796	TN
2409	9606784.514	561387.975	3.543	TN
2410	9606792.751	561386.616	3.491	TN
2411	9606800.740	561390.327	3.459	TN
2412	9606807.955	561384.663	3.461	TN
2413	9606815.994	561396.735	3.476	TN
2414	9606817.876	561405.566	3.526	TN
2415	9606817.907	561412.953	3.454	TN
2416	9606817.846	561412.999	3.451	TN
2417	9606818.461	561413.756	3.950	TN
2418	9606815.430	561421.306	3.508	TN
2419	9606816.119	561421.858	4.024	TN
2420	9606811.645	561433.297	3.483	TN
2421	9606813.969	561434.519	4.575	TN
2422	9606810.235	561445.788	3.607	TN
2423	9606810.914	561455.907	3.654	TN
2424	9606802.842	561462.254	3.483	TN
2425	9606794.364	561470.293	3.474	TN
2426	9606789.267	561476.673	3.604	TN
2427	9606789.531	561478.049	4.458	TN
2428	9606782.749	561478.132	3.562	TN
2429	9606782.542	561479.607	4.509	TN
2430	9606773.728	561475.323	3.577	TN
2431	9606772.364	561477.164	4.711	TN
2432	9606759.880	561472.964	4.195	TN
2433	9606758.931	561473.890	4.829	TN
2434	9606746.999	561470.952	3.547	TN
2435	9606746.972	561472.699	4.428	TN
2436	9606734.416	561475.401	3.650	TN
2437	9606734.915	561476.601	5.544	TN
2438	9606723.776	561477.456	4.102	TN
2439	9606724.671	561480.942	6.055	TN
2440	9606705.542	561485.325	5.531	TN
2441	9606705.120	561482.589	3.589	TN
2442	9606703.175	561504.594	5.497	TN



CONSORCIO CONSULTOR SAUL GARRIDO

C.P.C. MARIA LUISA CARBAJO MUÑOZ  
REPRESENTANTE COMÚN  
DNI N° 21966429

EDWARD CERÓN TORRES  
JEFE DE PROYECTO  
C.I.P. N° 61778

ARQ. DAVID HECTOR TORRES PUENTE  
CAP. 5776  
JEFE DE SUPERVISIÓN

**CONFORME**

000972

2443	9606686.895	561513.165	5.581	TN
2444	9606680.194	561496.429	5.650	TN
2445	9606678.430	561494.523	3.838	TN
2446	9606661.061	561524.526	5.596	TN
2447	9606652.469	561512.159	6.145	TN
2448	9606651.969	561509.645	4.016	TN
2449	9606610.338	561518.395	5.733	TN
2450	9606610.751	561516.455	4.642	TN
2451	9606617.119	561545.002	5.611	TN
2452	9606585.751	561532.023	6.174	TN
2453	9606581.338	561516.107	4.908	TN
2454	9606561.102	561513.165	5.197	TN
2455	9606532.177	561512.230	5.679	TN
2456	9606522.519	561498.537	6.051	TN
2457	9606540.544	561492.660	5.330	TN
2458	9606512.992	561460.075	6.921	TN
2459	9606527.808	561455.832	6.135	TN
2460	9606526.157	561432.893	7.559	TN
2461	9606529.110	561412.151	8.058	TN
2462	9606532.383	561407.582	6.177	TN
2463	9606525.512	561394.230	6.061	TN
2464	9606525.534	561383.143	6.452	TN
2465	9606534.229	561371.603	5.826	TN
2466	9606534.272	561371.623	5.827	TN
2467	9606538.667	561356.062	5.898	TN
2468	9606535.666	561351.372	6.696	TN
2469	9606558.700	561338.822	5.325	TN
2470	9606569.882	561353.004	4.868	TN
2471	9606588.368	561321.202	4.318	TN
2472	9606608.630	561356.562	3.897	TN
2473	9606609.559	561401.169	3.957	TN
2474	9606642.351	561368.605	3.671	TN
2475	9606666.368	561374.034	3.445	TN
2476	9606666.154	561374.756	3.723	TN
2477	9606675.556	561378.348	3.480	TN
2478	9606675.554	561379.277	3.598	TN
2479	9606679.075	561385.270	3.685	TN
2480	9606679.991	561387.550	3.492	TN
2481	9606679.966	561386.553	3.703	TN
2482	9606693.253	561388.332	3.451	TN
2483	9606693.259	561387.112	3.676	TN
2484	9606714.168	561387.074	3.488	TN
2485	9606714.398	561386.025	3.637	TN
2486	9606726.352	561376.134	3.768	TN
2487	9606746.895	561371.571	3.782	TN
2488	9606750.205	561388.861	3.415	TN
2489	9606749.653	561387.783	3.743	TN
2490	9606769.983	561388.552	3.474	TN



*[Signature]*  
EDWARD CERON TORRES  
JEFE DE PROYECTO  
C.I.P. N° 61778

CONSORCIO CONSULTOR SAUL GARRIDO  
*[Signature]*  
C.P.C. MARIA LUISA CARBAJO MUÑOZ  
REPRESENTANTE COMÚN  
DNI N° 21540429

*[Signature]*  
ARQ. DAVID HECTOR TORRES PUENTE  
CAP. 5776  
JEFE DE SUPERVISIÓN

**CONFIRME**

000971

2491	9606770.424	561386.916	3.757	TN
2492	9606778.452	561389.442	3.495	TN
2493	9606778.314	561388.317	3.857	TN
2494	9606769.627	561333.865	3.822	TN
2495	9606764.005	561312.192	3.280	TN
2496	9606764.212	561313.149	3.666	TN
2497	9606749.961	561312.633	3.299	TN
2498	9606750.054	561312.829	3.391	TN
2499	9606749.217	561317.793	3.548	TN
2500	9606720.753	561315.632	3.497	TN
2501	9606713.087	561339.324	4.056	TN
2502	9606678.543	561359.741	3.433	TN
2503	9606679.423	561360.077	3.946	TN
2504	9606678.872	561365.444	3.438	TN
2505	9606679.158	561364.674	3.918	TN
2506	9606674.008	561352.033	3.338	TN
2507	9606673.528	561350.865	3.898	TN
2508	9606656.603	561327.962	3.955	TN
2509	9606650.564	561301.192	3.392	TN
2510	9606645.258	561275.534	3.573	TN
2511	9606663.833	561276.404	3.385	TN
2512	9606664.179	561255.590	3.718	TN
2513	9606693.589	561250.895	3.940	TN
2514	9606702.680	561272.478	3.421	TN
2515	9606728.202	561268.610	3.366	TN
2516	9606731.504	561248.134	3.415	TN
2517	9606506.956	561314.552	15.761	VERT
2518	9606503.654	561310.683	19.013	VERT
2519	9606501.663	561308.066	21.227	VERT
2520	9606499.290	561305.571	23.582	VERT
2521	9606498.673	561303.476	25.354	VERT
2522	9606508.527	561302.319	22.259	VERT
2523	9606505.894	561295.616	25.852	VERT
2524	9606651.489	561180.730	20.652	PLZ
2525	9606658.265	561186.933	20.180	TN
2526	9606678.608	561174.088	20.027	TN
2527	9606672.214	561166.382	20.262	TN
2528	9606671.994	561166.506	20.374	TN
2529	9606670.364	561164.296	20.394	PLZ
2530	9606688.721	561151.491	19.915	TN
2531	9606693.081	561157.647	19.426	TN
2532	9606707.793	561148.068	19.673	TN
2533	9606734.355	561125.935	19.291	TN
2534	9606735.596	561118.167	18.945	TN
2535	9606737.699	561111.524	18.726	TN
2536	9606737.162	561105.090	18.620	TN
2537	9606730.959	561104.518	18.536	TN
2538	9606701.540	561139.938	19.998	VERT



CONSORCIO CONSULTOR SAUL GARRIDO

C.P.C. MARIA LUISA CARBAJO MUÑOZ  
REPRESENTANTE COMÚN  
DMI Nº 21546425

EDWARD CERON TORRES  
JEFE DE PROYECTO  
C.I.P. Nº 61778

ARQ. DAVID HECTOR TORRES PUENTE  
CAP. 5776  
JEFE DE SUPERVISIÓN

**CONFORME**

000970

2539	9606702.634	561137.591	20.025	VERT
2540	9606701.877	561135.043	19.925	VERT
2541	9606689.786	561120.745	19.794	VERT
2542	9606676.307	561162.749	20.065	VERT
2543	9606674.040	561163.272	20.110	VERT
2544	9606671.730	561161.924	20.282	VERT
2545	9606669.667	561159.421	20.278	VERT
2546	9606632.031	561191.897	21.378	VERT
2547	9606632.741	561190.084	21.200	VERT
2548	9606632.833	561189.932	21.247	VERT
2549	9606632.889	561189.250	21.277	VERT
2550	9606632.422	561188.180	21.356	VERT
2551	9606611.267	561211.401	21.811	VERT
2552	9606608.092	561208.485	21.988	VERT
2553	9606589.704	561188.644	22.288	VERT



EDWARD CERON TORRES  
JEFE DE PROYECTO  
C.I.P. N° 61778

CONSORCIO CONSULTOR SAUL GARRIDO

C.P.C. MARIA LUISA CARBAJO MUÑOZ  
REPRESENTANTE COMUN  
DNI N° 21546425

ARQ. DAVID HECTOR TORRES PUENTE  
CAP. 5776  
JEFE DE SUPERVISIÓN

**CONFORME**

000969

### PUNTOS TIN DE ENERGIA ELECTRICA

"RECONSTRUCCIÓN DEL HOSPITAL SAUL GARRIDO ROSILLO II-1,  
DISTRITO DE TUMBES, PROVINCIA DE TUMBES, DEPARTAMENTO  
DE TUMBES"

PUNTO	ESTE	NORTE	ELEVACION	DESCRIPCION
5	9606505962.000	561114473.000	20655.000	PMT
772	9606503896.000	561288021.000	26884.000	PMT
776	9606484562.000	561254575.000	29532.000	PLZ
782	9606478465.000	561231388.000	29147.000	PMT
783	9606474588.000	561226131.000	28628.000	PMT
784	9606471724.000	561217547.000	27998.000	PMT
785	9606473460.000	561216284.000	27900.000	PMT
791	9606467863.000	561205073.000	26896.000	PLZ
792	9606470168.000	561212114.000	27452.000	PLZ
800	9606466868.000	561151160.000	22767.000	PMT
810	9606505745.000	561114195.000	20793.000	PMT
814	9606518499.000	561114988.000	21099.000	PLZ
1704	9606517513.000	561102320.000	20578.000	PMT
1705	9606507723.000	561103341.000	20459.000	PLZ
1727	9606487692.000	561083939.000	19313.000	PLZ
1729	9606483886.000	561080610.000	19071.000	PLZ
1748	9606478844.000	561064157.000	18981.000	PMT
1773	9606354645.000	561169854.000	25540.000	PLZ
1779	9606370475.000	561157419.000	24693.000	PLZ
1786	9606387388.000	561151731.000	227920.000	PLZ
1789	9606396334.000	561137506.000	21868.000	PLZ
1796	9606420071.000	561127682.000	20488.000	PLZ
1797	9606428034.000	561121164.000	20264.000	PLZ
1801	9606423353.000	561114340.000	20005.000	PLZ
1815	9606465371.000	561088975.000	18443.000	PLZ
1824	9606470783.000	561073681.000	17796.000	PLZ
1825	9606467034.000	561031994.000	17112.000	PMT
1832	9606463294.000	561020466.000	18888.000	PLZ
1846	9606469267.000	560996812.000	19383.000	PLZ
1853	9606475004.000	560975450.000	19578.000	PLZ
1854	9606482878.000	560971746.000	19641.000	PMT
1855	9606486176.000	560963770.000	19715.000	PLZ
1856	9606481442.000	560950728.000	19717.000	PLZ
1857	9606488921.000	560919847.000	20110.000	PLZ
1870	9606493004.000	560903075.000	19859.000	PMT
1871	9606493197.000	560901005.000	19835.000	PMT
1887	9606497232.000	560917532.000	20077.000	PLZ
1888	9606497736.000	560916383.000	20010.000	PLZ
1890	9606499126.000	560909788.000	19960.000	PMT
1892	9606501556.000	560902010.000	19913.000	PLZ
1896	9606502289.000	560898005.000	19432.000	PLZ
1911	9606450477.000	561037982.000	17025.000	PMT
1914	9606447826.000	561045439.000	17154.000	PLZ
1919	9606446201.000	561047230.000	18020.000	PLZ
1947	9606402765.000	561063909.000	18497.000	PLZ
1948	9606386336.000	561080284.000	19246.000	PLZ
1952	9606377293.000	561089429.000	19789.000	PLZ
1957	9606351627.000	561105730.000	20927.000	PLZ



CONSORCIO CONSULTOR SAUL GARRIDO

C.P.C. MARIA LUISA CARBAJO MUÑOZ  
REPRESENTANTE COMÚN  
DNI N° 21546425

EDWARD CERÓN TORRES  
JEFE DE PROYECTO  
C.I.P. N° 61778

ARQ. DAVID HECTOR TORRES PUENTE  
CAP. 5776  
JEFE DE SUPERVISIÓN

1958	9606352876.000	561113635.000	21320.000	PLZ
1964	9606326728.000	561139024.000	23661.000	PLZ
1967	9606318317.000	561139507.000	21676.000	PLZ
1983	9606281818.000	561170672.000	20265.000	PLZ
1985	9606279602.000	561181359.000	21199.000	PLZ
1993	9606244375.000	561200425.000	25487.000	PLZ
1996	9606239554.000	561212093.000	27074.000	PLZ
2000	9606219773.000	561226592.000	29577.000	PLZ
2001	9606211423.000	561225476.000	30125.000	PLZ
2011	9606203660.000	561231724.000	31362.000	PLZ
2012	9606204276.000	561232287.000	30435.000	PLZ
2027	9606205471.000	561208071.000	27237.000	PLZ
2036	9606193946.000	561197756.000	26865.000	PLZ
2045	9606164870.000	561191004.000	25574.000	PLZ
2046	9606164621.000	561195538.000	25636.000	PLZ
2047	9606155036.000	561190302.000	24702.000	PLZ
2053	9606138138.000	561187996.000	22094.000	PLZ
2080	9606092929.000	561228044.000	18024.000	PLZ
2081	9606096229.000	561229812.000	18396.000	PLZ
2107	9606080211.000	561211636.000	17116.000	PMT
2110	9606082790.000	561205797.000	17024.000	PLZ
2114	9606093079.000	561182112.000	16623.000	PLZ
2115	9606093430.000	561180942.000	16630.000	PMT
2123	9606086401.000	561173312.000	18636.000	PLZ
2124	9606085806.000	561173381.000	18678.000	PLZ
2134	9606124543.000	561148179.000	15954.000	PLZ
2136	9606114356.000	561163097.000	16856.000	PMT
2146	9606185265.000	561206920.000	28580.000	PLZ
2150	9606212738.000	561200365.000	26480.000	PLZ
2152	9606215960.000	561184804.000	25069.000	PLZ
2156	9606228863.000	561183894.000	24868.000	PLZ
2159	9606253643.000	561157500.000	22051.000	PLZ
2179	9606308417.000	561101102.000	17367.000	PLZ
2182	9606331877.000	561076326.000	19170.000	PLZ
2183	9606332319.000	561076047.000	19311.000	PLZ
2184	9606334225.000	561063193.000	18562.000	PLZ
2187	9606334476.000	561065575.000	18568.000	PLZ
2190	9606353264.000	561054233.000	18420.000	PLZ
2211	9606380385.000	561026449.000	15396.000	PLZ
2212	9606382989.000	561027193.000	15469.000	PLZ
2245	9606488248.000	561288357.000	26017.000	PMT
2254	9606465130.000	561301352.000	26387.000	PLZ
2270	9606427371.000	561314028.000	30610.000	PLZ
2277	9606417205.000	561312118.000	30390.000	PMT
2278	9606398914.000	561324462.000	29231.000	PLZ
2356	9606355509.000	561339328.000	30082.000	PLZ
2363	9606348735.000	561334542.000	29862.000	PMT
2373	9606318122.000	561352555.000	32304.000	PMT
2388	9606290074.000	561353919.000	32850.000	PLZ
2389	9606286399.000	561362764.000	32740.000	PLZ
2396	9606281831.000	561356524.000	32898.000	PMT
2397	9606265000.000	561361153.000	33177.000	PMT
2398	9606265264.000	561362129.000	33129.000	PMT
2405	9606260963.000	561370391.000	33197.000	PLZ

**CONFORME**

000968



EDWARD GERÓN TORRES  
JEFE DE PROYECTO  
C.I.P. N° 61778

CONSORCIO CONSULTOR SAUL GARRIDO  
C.P.C. MARIA LOISA CARBAJO MUÑOZ  
REPRESENTANTE COMÚN  
DNI N° 21546425

ARQ. DAVID HECTOR TORRES PUENTE  
CAP. 5776  
JEFE DE SUPERVISIÓN

**CONFORME**

000967

2423	9606252321.000	561385910.000	33512.000	PLZ
2424	9606253434.000	561383788.000	33455.000	PLZ
2437	9606256985.000	561364983.000	33055.000	PMT
2438	9606259126.000	561364359.000	33077.000	PMT
2440	9606247004.000	561365703.000	33335.000	PLZ
2441	9606248697.000	561367192.000	33284.000	PLZ
2477	9606230636.000	561316357.000	32342.000	PLZ
2487	9606223041.000	561289322.000	31873.000	PLZ
2497	9606218141.000	561277280.000	31700.000	PLZ
2531	9606226254.000	561390406.000	32069.000	PLZ
2535	9606211219.000	561357551.000	30133.000	PLZ
2536	9606205380.000	561359937.000	30048.000	PLZ
2537	9606205249.000	561360353.000	30073.000	PLZ
2538	9606204909.000	561343766.000	29442.000	PLZ
2552	9606146986.000	561261637.000	24972.000	PLZ
2553	9606151388.000	561257147.000	25159.000	PLZ
2554	9606222194.000	561398243.000	32303.000	PLZ
2563	9606238758.000	561433608.000	32240.000	PLZ
2564	9606247486.000	561438352.000	32358.000	PLZ
2579	9606252627.000	561466340.000	31931.000	PLZ
2581	9606271622.000	561491081.000	32225.000	PLZ
2582	9606271686.000	561491589.000	32086.000	PLZ
2584	9606270929.000	561508192.000	32146.000	PLZ
2590	9606285829.000	561516094.000	31437.000	PLZ
2597	9606284985.000	561540075.000	31707.000	PLZ
2598	9606293271.000	561552113.000	31358.000	PLZ
2601	9606300208.000	561570220.000	30610.000	PLZ
2603	9606314371.000	561565357.000	30318.000	PLZ
2612	9606326100.000	561516474.000	30436.000	PLZ
2613	9606324951.000	561513842.000	30232.000	PLZ
2619	9606307419.000	561505818.000	29352.000	PLZ
2627	9606306132.000	561481798.000	28943.000	PLZ
2630	9606292799.000	561457154.000	29253.000	PLZ
2631	9606289319.000	561453474.000	29221.000	PLZ
2655	9606277704.000	561429872.000	30259.000	PLZ
2656	9606277863.000	561429039.000	30203.000	PLZ
2662	9606265167.000	561407294.000	32732.000	PLZ
2663	9606262440.000	561401521.000	32736.000	PLZ
2668	9606290708.000	561431959.000	28764.000	PLZ
2675	9606323281.000	561420010.000	28286.000	PLZ
2676	9606324216.000	561411936.000	28450.000	PLZ
2684	9606348819.000	561397252.000	28918.000	PLZ
2689	9606378322.000	561379899.000	28090.000	PLZ
2720	9606430415.000	561346897.000	28053.000	PLZ
2724	9606451719.000	561334058.000	28433.000	PLZ
2803	9606457641.000	561453112.000	10527.000	PLZ
2804	9606471540.000	561430020.000	10358.000	PLZ
2807	9606487517.000	561403606.000	9846.000	PLZ
2812	9606502451.000	561378098.000	10200.000	PMT
2861	9606633873.000	561196167.000	20973.000	PLZ
2862	9606627913.000	561201886.000	21218.000	PLZ
2863	9606624698.000	561198833.000	21472.000	PLZ
2864	9606613649.000	561209241.000	21706.000	PLZ
2865	9606616805.000	561211919.000	21554.000	PLZ



CONSORCIO CONSULTOR SAUL GARRIDO

C.P.C. MARIA LUISA CARBAJO MUÑOZ  
REPRESENTANTE COMÚN  
DNI N° 21546425

EDWARD CERON TORRES  
JEFE DE PROYECTO  
C.I.P. N° 61778

ARQ. DAVID HECTOR TORRES PUENTE  
CAP. 5776  
JEFE DE SUPERVISIÓN

**CONFORME** 000966

2866	9606609772.000	561218325.000	21730.000	PLZ
2867	9606601065.000	561223963.000	21998.000	PLZ
2868	9606589646.000	561211780.000	22191.000	PLZ
2869	9606597342.000	561206278.000	22188.000	PLZ
2870	9606585907.000	561192360.000	22367.000	PLZ
2871	9606581892.000	561193273.000	22592.000	PLZ
2877	9606574497.000	561179788.000	22532.000	PLZ
2899	9606529167.000	561343678.000	94950.000	PMT
2917	9606556278.000	561308156.000	86460.000	PLZ
2922	9606567393.000	561300851.000	83270.000	PMT
2930	9606589370.000	561284007.000	81430.000	PLZ
2983	9606622485.000	561259715.000	77060.000	PLZ
2984	9606629043.000	561255642.000	76630.000	PMT
2995	9606655694.000	561235507.000	77560.000	PLZ
3010	9606693910.000	561208505.000	68200.000	PMT
3011	9606696343.000	561205981.000	66310.000	PLZ
3027	9606736455.000	561176438.000	61580.000	PLZ
3037	9606761904.000	561158028.000	66510.000	PMT
3073	9606802939.000	561114701.000	55920.000	PMT
3078	9606807115.000	561103664.000	55950.000	PLZ
3186	9606865591.000	561564522.000	54050.000	PLZ
3187	9606865337.000	561566268.000	56280.000	PLZ
3188	9606865337.000	561566266.000	56220.000	PLZ
3189	9606872143.000	561549607.000	49460.000	PLZ
3190	9606846881.000	561553872.000	48530.000	PLZ
3191	9606818620.000	561558663.000	49540.000	PLZ
3192	9606789852.000	561563424.000	56760.000	PLZ
3193	9606761858.000	561568290.000	54970.000	PLZ
3194	9606732938.000	561573112.000	56290.000	PLZ
3195	9606732196.000	561573788.000	51730.000	PLZ
3196	9606704526.000	561577958.000	55410.000	PLZ
3333	9606651489.000	561180730.000	20652.000	PLZ
3338	9606670364.000	561164296.000	20394.000	PLZ



EDWARD CERON TORRES  
JEFE DE PROYECTO  
C.I.P. N° 61778

CONSORCIO CONSULTOR SAUL GARRIDO  
C.P.C. MARIA LUISA CARBAJO MUÑOZ  
REPRESENTANTE COMÚN  
DNI N° 21546425

LEYENDA	
CODIGO	DESCRIPCION
PLZ	PLZ POSTE DE LUZ
PMT	PMT- POSTE DE MEDIA TENS

ARQ. DAVID HECTOR TORRES PUENTE  
CAP. 5776  
JEFE DE SUPERVISIÓN



**CONFORME**

000565


### PUNTOS TIN DE ENERGIA ELECTRICA

“RECONSTRUCCIÓN DEL HOSPITAL SAUL GARRIDO ROSILLO II-1, DISTRITO DE TUMBES, PROVINCIA DE TUMBES, DEPARTAMENTO DE TUMBES”

PUNTO	ESTE	NORTE	ELEVACION	DESCRIPCION
1000	9606521.543	561105.153	20.957	TUM01102
2738	9606505.919	561285.741	27.262	BM-04
2931	9606456.746	561250.721	30.546	TUM 01103
2948	9606275.529	561339.720	32.238	BM-03
2953	9606258.452	561228.960	28.803	BM-02
2956	9606365.874	561194.138	28.486	BM-01



CONSORCIO CONSULTOR SAUL GARRIDO

  
C.P.C. MARIA LUISA CARBAJO MUÑOZ  
REPRESENTANTE COMÚN  
DNI N° 21546425

  
EDWARD CERÓN TORRES  
JEFE DE PROYECTO  
C.I.P. N° 61778

  
ARQ. DAVID HECTOR TORRES PUENTE  
CAP. 5776  
JEFE DE SUPERVISIÓN

CONFORME 000564

## PUNTOS TIN DE ENERGIA ELECTRICA

"RECONSTRUCCIÓN DEL HOSPITAL SAUL GARRIDO ROSILLO II-1, DISTRITO DE TUMBES, PROVINCIA DE TUMBES, DEPARTAMENTO DE TUMBES"

PUNTO	ESTE	NORTE	ELEVACION	DESCRIPCION
543	9606552.096	561140.378	21.659	BZN
1691	9606552.116	561140.356	17.801	CF
1702	9606521.328	561107.084	17.698	BZN
1703	9606521.375	561106.876	20.631	BZN
1742	9606473.717	561076.565	18.718	CF
1746	9606480.167	561071.077	17.362	CF
1747	9606480.229	561071.167	19.005	BZN
1761	9606456.872	561044.356	15.545	CF
1762	9606456.974	561044.442	17.115	BZN
1763	9606473.719	561076.549	18.686	BZN
1782	9606377.010	561155.483	23.791	BZN
1783	9606377.104	561155.491	22.331	CF
1802	9606423.553	561118.055	19.873	BZN
1803	9606423.551	561118.011	18.778	BZN
1837	9606459.830	561007.579	19.306	BZN
1842	9606459.796	561007.492	17.874	CF
1866	9606485.448	560911.779	19.882	BZN
1883	9606485.445	560911.797	19.521	CF
1923	9606426.976	561031.598	16.570	BZN
1928	9606427.057	561031.565	15.026	CF
1973	9606297.356	561163.448	19.195	BZN
1974	9606297.349	561163.317	17.598	CF
2151	9606217.319	561188.501	25.169	BZN
2154	9606217.307	561188.657	24.250	CF
2163	9606258.460	561146.836	20.819	BZN
2164	9606258.371	561146.821	19.319	CF
2169	9606269.850	561136.461	17.291	BZN
2170	9606269.971	561136.488	19.699	BZN
2191	9606333.872	561067.631	14.587	CF
2192	9606333.910	561067.637	18.618	BZN
2197	9606368.209	561031.715	15.743	BZN
2200	9606368.159	561031.638	14.349	CF
2206	9606377.414	561024.923	15.320	BZN
2208	9606377.347	561024.906	13.929	CF
2222	9606212.257	561245.140	30.919	BZN
2295	9606402.174	561339.080	26.584	BZN
2309	9606402.227	561339.075	24.000	CF
2311	9606418.321	561352.479	22.944	BZN
2355	9606373.120	561329.959	27.944	BZN
2358	9606373.137	561329.923	26.644	CF
2380	9606306.963	561352.110	32.257	BZN
2385	9606306.957	561352.058	30.257	CF
2433	9606212.289	561245.064	29.639	CF



EDWARD CERON TORRES  
JEFE DE PROYECTO  
C.I.P. N° 61778

CONSORCIO CONSULTOR SAUL GARRIDO

C.P.C. MARIA LUISA CARBAJO MUÑOZ  
REPRESENTANTE COMUN  
DNI N° 21546425


ARQ. DAVID HECTOR TORRES PUENTE  
CAP. 5776  
JEFE DE SUPERVISIÓN

**CONFORME**

000963

2435	9606252.224	561370.951	31.626	CF
2436	9606252.313	561371.003	33.238	BZN
2506	9606220.262	561268.427	31.279	BZN
2523	9606252.710	561391.236	33.257	BZN
2644	9606280.777	561440.272	29.383	BZN
2674	9606314.089	561419.180	28.233	BZN
2706	9606388.215	561377.696	27.561	CF
2707	9606388.043	561377.733	28.035	BZN
2721	9606429.961	561344.665	27.980	BZN
2727	9606455.084	561328.186	28.286	BZN
2728	9606455.016	561327.859	25.743	CF
2730	9606464.024	561318.569	26.145	BZN
2731	9606463.940	561318.626	27.447	BZN
2760	9606447.316	561386.184	16.139	BZN

  
-----  
EDWARD CERÓN TORRES  
JEFE DE PROYECTO  
C.I.P. N° 61778

CONSORCIO CONSULTOR SAUL GARRIDO  
  
-----  
C.P.C. MARÍA LUISA CARBAJO MUÑOZ  
REPRESENTANTE COMÚN  
DNI N° 21546425



  
-----  
ARQ. DAVID HECTOR TORRES PUENTE  
CAP. 5776  
JEFE DE SUPERVISIÓN



# COMPENSACION HORIZONTAL POLIGONAL BASICA CERRADA



PROYECTO: "RECONSTRUCCIÓN DEL HOSPITAL SAUL GARRIDO ROSILLO II-1, DISTRITO DE TUMBES, PROVINCIA DE TUMBES, DEPARTAMENTO DE TUMBES"

**LOCALIDAD:** TUMBES      **PROVINCIA:** TUMBES      **EQUIPO:** GPS DIFERENCIAL  
**DISTRITO:** TUMBES      **DEPARTAMENTO:** TUMBES      **FECHA:** SETIEMBRE 2021



**COMPENSACION**

ATRÁS	EST	ADEL	ANGULO HORIZONTAL	AZIMUT OBSERVADO	AZIMUT CORREGIDO	DIST.	CALCULADO ESTE	CORRECCION ESTE	CORRECCION NORTE	VARIACION ESTE	VARIACION NORTE	COORDENADAS UTM NORTE	COORDENADAS UTM ESTE	COTA
TUM01102	TUM01103	BM02	219° 48' 2"	153° 47' 50"	153° 48' 26"	199.484	88.051	0.001	0.001	88.052	-178.999	9606456.746	561250.721	30.546
TUM01103	BM02	BM03	304° 38' 11"	278° 26' 1"	278° 27' 13"	112.069	-110.851	-0.001	-0.003	-110.852	16.472	9606258.452	561228.960	28.803
BM02	BM03	TUM01103	299° 57' 35"	38° 23' 36"	38° 25' 24"	201.892	125.469	-0.001	-0.001	125.468	158.170	9606275.529	561339.720	32.238
BM03	TUM01103	TUM01102	75° 33' 48"	293° 57' 25"	293° 59' 48"	513.445	102.669	-0.001	-0.003	102.668	-4.358	9606456.746	561250.721	30.546
			0° 2' 23"	0° 0' 0"	0° 0' 0"									
			762° 190.5	762° 191										

**ANGULO HORIZONTAL OBSERVADO**

**PRECISION 1/162500**

**ERROR LINEAL 0.003 m**

**TOLERANCIA LINEAL 0.095 m**

**CONFORME**

000962

ARQ. DAVID TELLO J. FUENTE

CAP. 5776

**JEFE DE SUPERVISIÓN**

**CONSORCIO CONSULTOR SAUL GARRIDO**

C.P.C. MARIA LUISA CARBAJO MUÑOZ

REPRESENTANTE COMIUN

DNI N° 2,154,6425

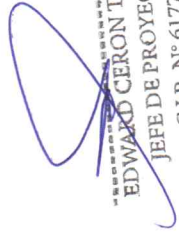
**EDWARD CERCA TORRES**

**JEFE DE PROYECTO**

C.I.P. N° 61778

BM's DEL POLIGONAL				A			B			LONGITUD		
ESTACION	ESTE	NORTE	COTA	TRAMOS	ESTE	NORTE	ESTE	NORTE	A	B	C	
TUM01102	561105.137	9606521.554	20.723	TUM0110 a TUM0110	561105.137	9606521.554	561250.721	9606456.746	145.584	64.808	159.357	
TUM01103	561250.721	9606456.746	30.546	TUM0110 a BM02	561250.721	9606456.746	561228.960	9606258.452	21.761	198.294	199.484	
BM02	561228.960	9606258.452	28.803	BM02 a BM03	561228.960	9606258.452	561339.720	9606275.529	110.760	17.077	112.069	
BM03	561339.720	9606275.529	32.238	BM03 a TUM0110	561339.720	9606275.529	561250.721	9606456.746	88.999	181.217	201.892	
TUM01103	561250.721	9606456.746	30.546									

CONSORCIO CONSULTOR SAUL GARRIDO  
 C.P.C. MARÍA LUISA CARBAJO MUÑOZ  
 REPRESENTANTE COMÚN  
 DNI Nº 21546425

  
 EDUARDO CERON TORRES  
 JEFE DE PROYECTO  
 C.I.P. N° 61778



  
 ARQ. DAVID HECTOR TORRES PUENTES  
 CAP. 5776  
 JEFE DE SUPERVISIÓN

**CONFORME**

000961

CUADRO DE AREAS				
N° PARCELA	AREA (m <sup>2</sup> )	PERIMETRO (m)	DISTANCIA (m)	DIRECCIÓN
PARCELA : 1	24177.77m <sup>2</sup>	648.06	P1-P2: 207.53 P2-P3: 110.17 P3-P4: 206.87 P4-P1: 123.49	S18° 31' 23.84"E S72° 02' 31.62"W N22° 12' 56.76"W N71° 28' 44.29"E

CUADRO DE COORDENADAS					
VERTICE	LADO	DIST.	ANGULO	ESTE	NORTE
P1	P1 - P2	207.53	90°00'08.13"	561289.285	9606448.748
P2	P2 - P3	110.17	89°26'04.54"	561355.214	9606251.974
P3	P3 - P4	206.87	94°15'28.38"	561250.410	9606218.006
P4	P4 - P1	123.49	86°18'18.95"	561172.192	9606409.522

CUADRO DE DATOS TÉCNICOS - Bms					
NÚMERO	ESTE	NORTE	ALTURA	CÓDIGO	TIPO
1	560200.929	9606385.595	11.051	TU02	ERP
2	561105.137	9606521.554	20.723	TUM01102	HITO
3	561250.721	9606456.746	30.546	TUM01103	HITO
4	561194.1380	9606365.874	28.486	BM - 01	HITO
5	561228.960	9606258.452	28.803	BM - 02	HITO
6	561339.720	9606275.529	32.238	BM - 03	HITO
7	561285.741	9606505.919	27.262	BM - 04	HITO

CUADRO DE DATOS DE COLINDANTES		
NÚMERO	UBICACIÓN	COLINDANTE
1	NORTE	PROPIEDAD PRIVADA
2	ESTE	CALLE VICTOR DE LA TORRE
3	SUR	PROLONGACION SAN PEDRO
4	OESTE	PROPIEDAD DEL EJERCITO

CENTROIDE DEL PREDIO	
ESTE (X)	NORTE (Y)
561266.140	9606333.929

**ESPECIFICACIONES**  
 - LAS CURVAS DE NIVEL LAS MAYORES SE ENCUENTRAN DE 5 m , LAS MENORES ESTA A 0.25 m.

**LEYENDA**

- VÍAS - ACCESOS
- RED DE AGUA
- AREA Y PERIMETRO
- AREA TOTAL GENERAL
- PUNTOS DE CONTROL
- HITOS - PLACA DE BRONCE
- CURVAS DE NIVEL - MAYORES
- CURVAS DE NIVEL - MENORES
- PAT - POSTES DE ALUMBRADO PUBLICO
- PMT - POSTES DE LUZ DE MEDIA TENSION
- CALIACATAS

PROYECTO: ELABORACION DEL EXPEDIENTE TECNICO, EQUIPAMIENTO Y COMINGUACION DEL PROYECTO "RECONSTRUCCION DE HOSPITAL SAUL GARRIDO" PROYECTO N° 001 DE TUMBES PROVINCIA DE TUMBES DEPARTAMENTO DE TUMBES

LABORADOR: SAUL GARRIDO

PROYECTISTA: SAUL GARRIDO

TOPOGRAFIA

TOPOGRAFICO

CONSORCIO CONSULTOR SAUL GARRIDO S.R.L.

JEFE DE PROYECTO: SAUL GARRIDO

JEFE DE SUPERVISION: SAUL GARRIDO

FECHA: ABRIL 2022

ESCALA: 1/750

000000

**CONFORME**

ARQ. DAVID HECTOR TORRES PUENTE  
 CAP. 5776  
 JEFE DE SUPERVISION

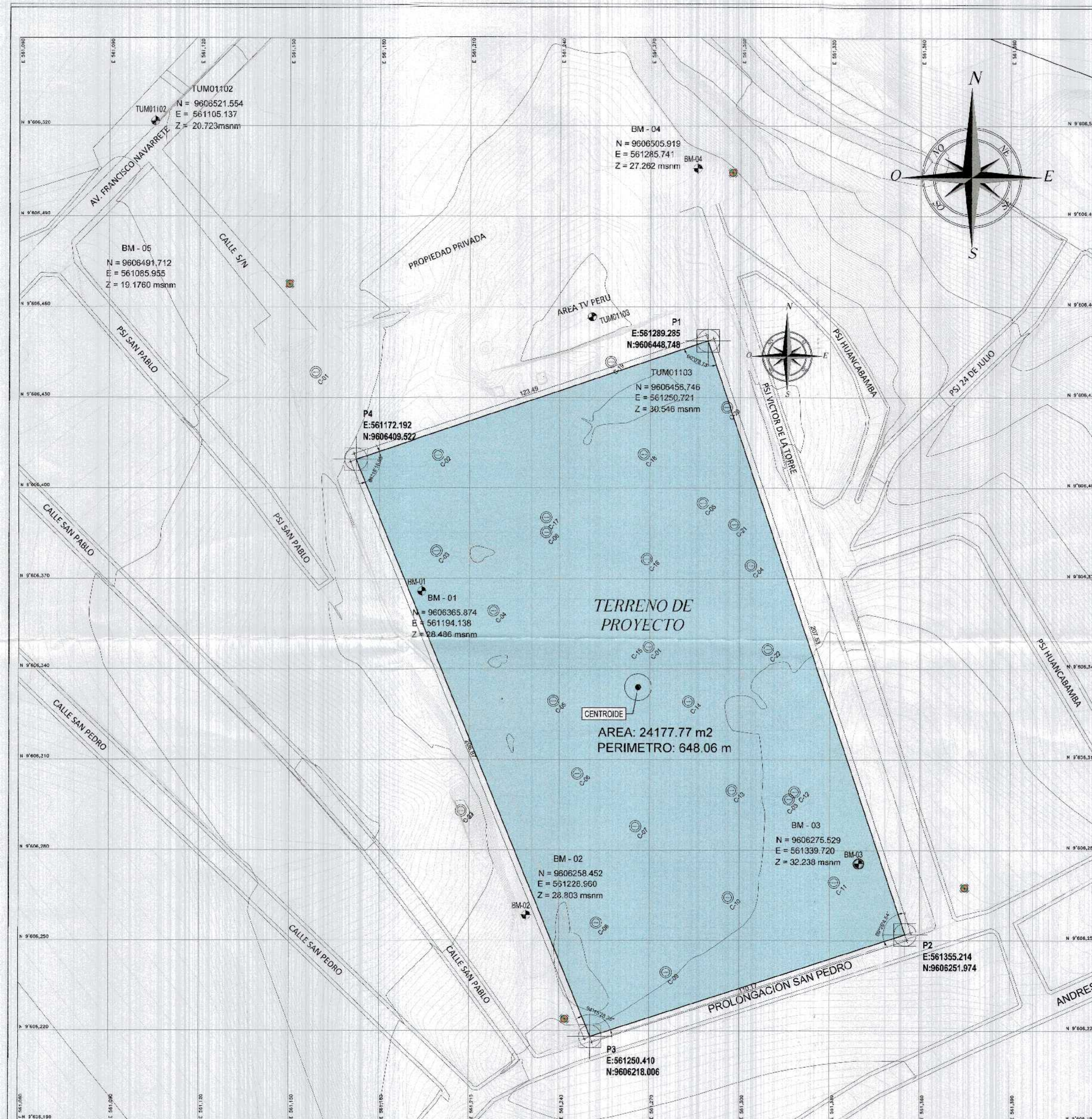


JEFE DE SUPERVISION

JEFE DE PROYECTO

CONSORCIO CONSULTOR SAUL GARRIDO  
 C.P.C. MARÍA LUISA CARBAJO MUÑOZ  
 REPRESENTANTE COMÚN  
 DNI N° 25348453

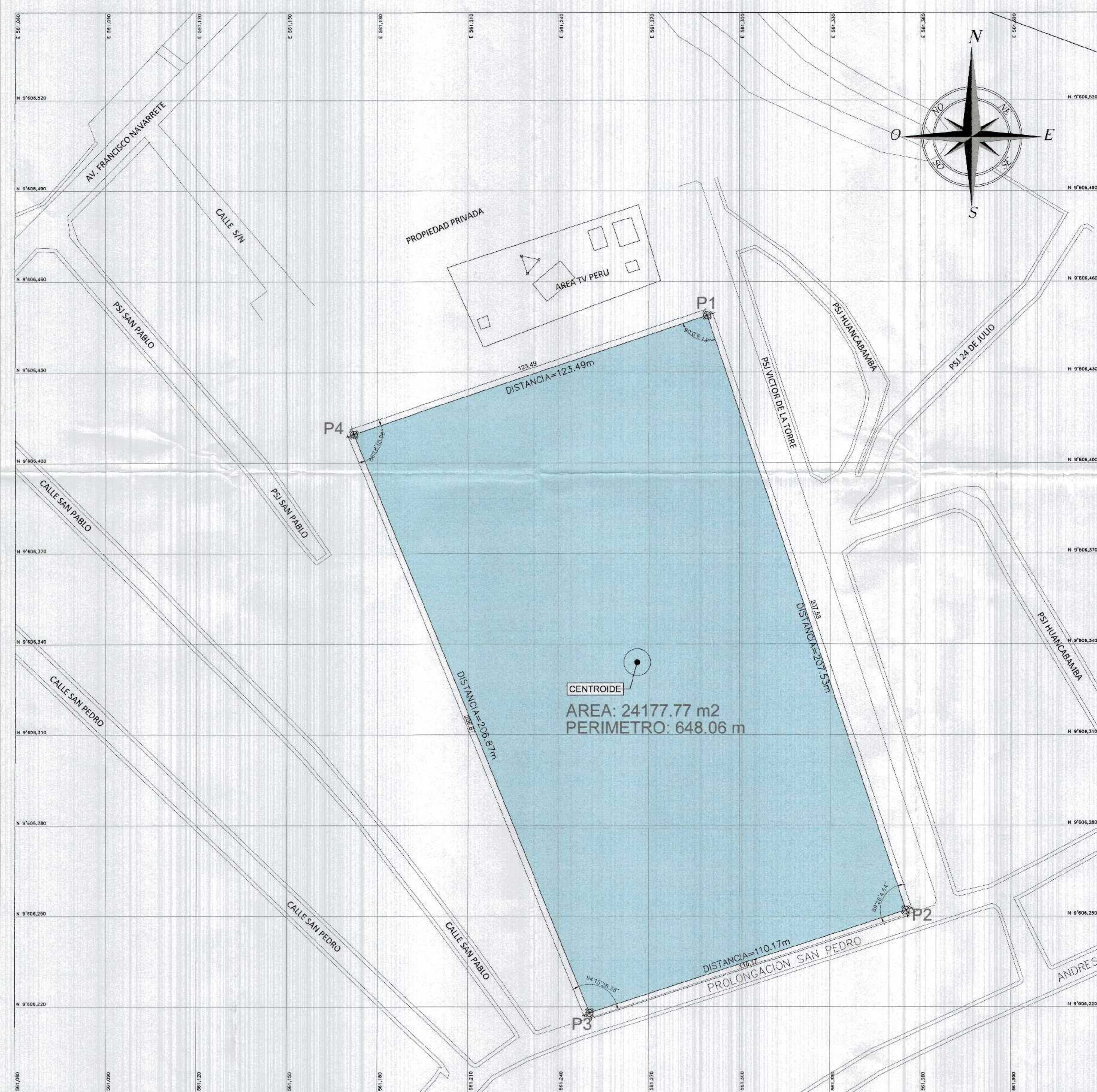
**PT-01**



**Plano Topográfico**  
 Escala 1/750

# Area y Perimetro.

Escala 1/750



N° PARCELA	AREA (m <sup>2</sup> )	PERIMETRO (m)	DISTANCIA (m)	DIRECCIÓN
PARCELA : 1	24177.77m <sup>2</sup>	648.06	P1-P2: 207.53 P2-P3: 110.17 P3-P4: 206.87 P4-P1: 123.49	S18° 31' 23.84"E S72° 02' 31.62"W N22° 12' 56.76"W N71° 28' 44.29"E

VERTICE	LADO	DIST.	ANGULO	ESTE	NORTE
P1	P1 - P2	207.53	90°00'08.13"	561289.285	9606448.748
P2	P2 - P3	110.17	89°26'04.54"	561355.214	9606251.974
P3	P3 - P4	206.87	94°15'28.38"	561250.410	9606218.006
P4	P4 - P1	123.49	86°18'18.95"	561172.192	9606409.522

NÚMERO	ESTE	NORTE	ALTURA	CÓDIGO	TIPO
1	560200.929	9606385.595	11.051	TU02	ERP
2	561105.137	9606521.554	20.723	TUM01102	HITO
3	561250.721	9606456.746	30.546	TUM01103	HITO
4	561194.1380	9606365.874	28.486	BM - 01	HITO
5	561228.960	9606258.452	28.803	BM - 02	HITO
6	561339.720	9606275.529	32.238	BM - 03	HITO
7	561285.741	9606505.919	27.262	BM - 04	HITO

NÚMERO	UBICACIÓN	COLINDANTE
1	NORTE	PROPIEDAD PRIVADA
2	ESTE	CALLE VICTOR DE LA TORRE
3	SUR	PROLONGACION SAN PEDRO
4	OESTE	PROPIEDAD DEL EJERCITO

ESTE (X)	NORTE (Y)
561266.140	9606333.929

**ESPECIFICACIONES**  
 LAS CURVAS DE NIVEL LAS MAYORES SE ENCUENTRAN DE 5 m , Y LAS MENORES ESTA A 0.25 m.

AREA: 24177.77 m<sup>2</sup>  
 PERIMETRO: 648.06 m

**LEYENDA**

- VIAS ACCESOS
- AREA Y PERIMETRO
- AREA TOTAL GENERAL
- PUNTOS DE CONTROL
- HITOS PLACA DE BRONCE
- PLZ PORTES DE LUZ
- CALIACATAS

FORMULARIO DE PROYECTO

FORMULARIO DE SUPERVISION

PROYECTO: ELABORACION DEL EXPEDIENTE TECNICO, EQUIPAMIENTO Y CONTINGENCIA DEL PROYECTO RECONSTRUCCION DEL HOSPITAL SAUL GARRIDO ROSILLO P.H. DISTRITO DE TUMBES, PROVINCIA DE TUMBES, DEPARTAMENTO DE TUMBES

ASOCIACION: TUMBES TUMBES TUMBES

ESPECIFICACION: TOPOGRAFIA

TITULO: AREA Y PERIMETRO

ELABORADO POR: CONSORCIO CONSULTOR SAUL GARRIDO RUC: 20527790008

PROFESIONAL RESPONSABLE: JULIO R. SANTELMAN JESUS

FECHA: AERL 2022

LUBRO

000959

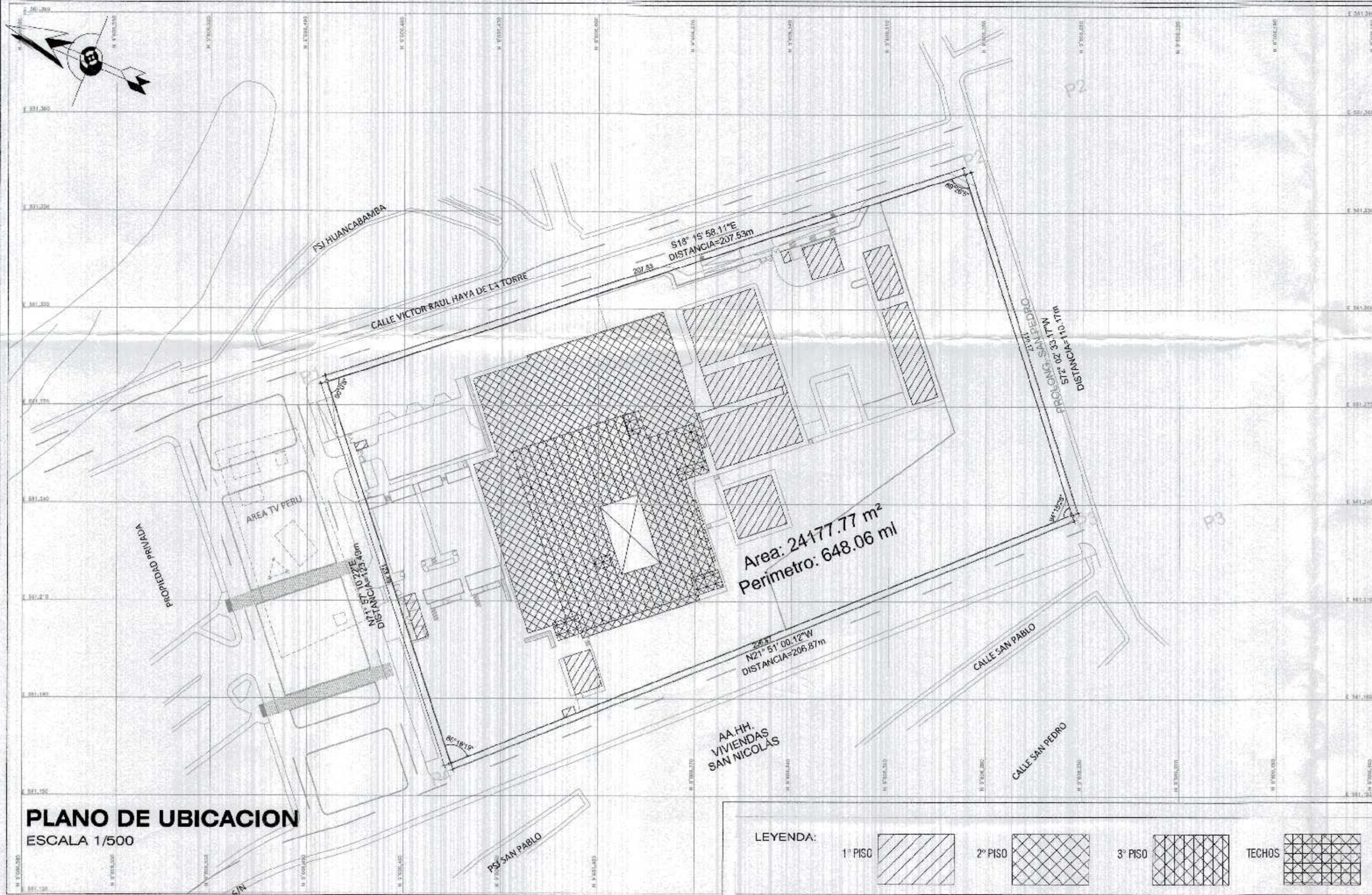
**CONFORME**

ARQ. DAVID HECTOR TORRES PUEENTE  
 CAP. 5776  
 JEFE DE SUPERVISION

EDUARDO TORRES TORRES  
 JEFE DE PROYECTO  
 CAP. N° 61778

CONSORCIO CONSULTOR SAUL GARRIDO  
 C.P.C. AMERICA LUISA CARBAJO MUÑOZ  
 REPRESENTANTE COMON  
 RUC N° 215444444

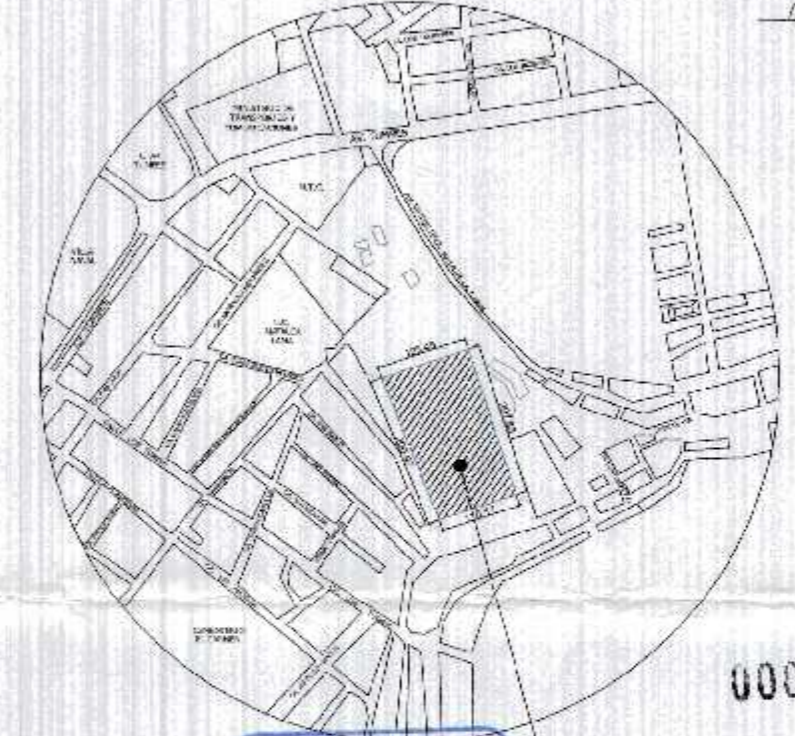
AP-01



**PLANO DE UBICACION**  
ESCALA 1/500



**ESQUEMA DE LOCALIZACION**  
ESC. : 1/ 10,000



000958  
Area del Proyecto  
Propiedad de GORE  
TUMBES  
ARQ. DAVID HECTOR TORRES FUENTE  
CAP. 5776  
JEFE DE SUPERVISION

ZONIFICACION : URBANA  
AREA DE ESTRUCTURACION : SERVICIOS URBANA COMPLEMENTARIOS

DEPARTAMENTO : TUMBES  
PROVINCIA : TUMBES  
DISTRITO : TUMBES  
URBANIZACION : AA.HH. SAN NICOLAS - BARRIO EL PACIFICO

NOMBRE DE LA VÍA : --  
MANZANA : --  
LOTE : --

ARQ. DAVID HECTOR TORRES FUENTE  
CAP. 5776  
JEFE DE SUPERVISION  
  
EDWARD CERÓN TORRES  
JEFE DE PROYECTO  
C.P.C. N.º 111111

CONSORCIO CONSULTOR SAUL GARRIDO  
C.P.C. MARIA LUISA CARBAJO MUÑOZ  
REPRESENTANTE COMUN  
DNI N.º 21846425

PROYECTO: "RECONSTRUCCIÓN DEL HOSPITAL SAUL GARRIDO ROSILLO II-1 - DISTRITO DE TUMBES - PROVINCIA DE TUMBES - REGION TUMBES"

PLANO: UBICACIÓN Y LOCALIZACIÓN LAMINA: U-01  
ESCALA: INDICADA FECHA: ABRIL 2022

CUADRO NORMATIVO			CUADRO DE AREAS (m2.)						
PARAMETROS	NORMATIVO	PROYECTO	PISOS/ NIVELES	Existente	Demolicion	Nueva (m2)	Ampliacion	Remodelacion	SUB-TOTAL
USOS	SALUD (H)	HOSPITAL II - 1	Piso Técnico	--	--	7176.62	--	--	7176.62
DENSIDAD NETA	H2: Hospital general de 20000 a 50000 hab.	--	Primer piso	--	--	6855.04	--	--	6855.04
COEF. DE EDIFICACION	Según Proyecto	--	Segundo piso	--	--	4553.06	--	--	4553.06
% DE AREA LIBRE	NTS 110 MINSA	71.65%	Tercer piso	--	--	2442.94	--	--	2442.94
ALTURA MAXIMA	Según Proyecto	3 PISOS + AZOTEA	Azotea	--	--	228.56	--	--	228.56
RETIRO MINIMO	Frontal	--							
	Lateral	--							
	Posterior	--							
ALINEAMIENTO FACHADA	--	--	AREA PARCIAL(no incluye piso Técnico)						14,079.60 m2
AREA DE LOTE NORMATIVO	--	--	AREA TECHADA TOTAL(incluye Piso Técnico)						21,256.22 m2
FRENTE MINIMO NORMATIVO	--	148.58 m	AREA DEL TERRENO						24,177.77 m2
N° DE ESTACIONAMIENTOS	NTS 110 MINSA	51	AREA LIBRE				71.65%		20,322.73 m2